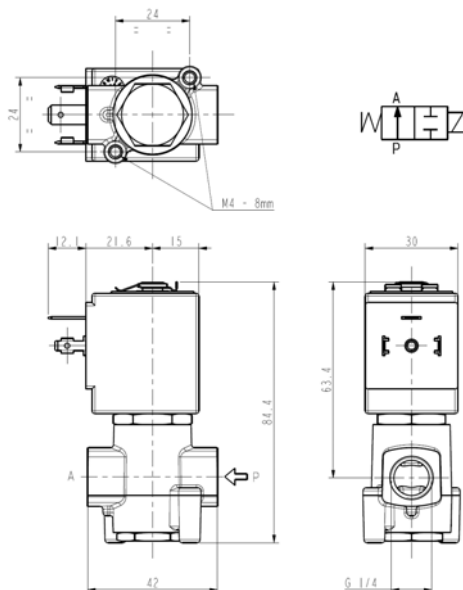




**SOLENOID VALVE**  
**2/2 - NO (Normally open)**  
**Direct acting**  
**G 1/4**

L256V



► **GENERAL FEATURES**

Direct acting solenoid valve, suitable for vacuum at port "P" (PA – PP = max 1 bar)  
 Suitable to shut off liquid and gaseous fluids; particularly suitable in the applications in sterilising autoclaves (verify the compatibility of fluid with materials in contact).

► **TECHNICAL FEATURES**

*Maximum allowable pressure (PS)* 40 bar  
*Opening time* ~20ms  
*Closing time* ~20ms  
*Fluid temperature* 0°C +130°C (FPM)  
*Max viscosity* 5°E (~37 cStokes or mm<sup>2</sup>/s)

► **MATERIALS IN CONTACT WITH FLUID**

*Body* Brass or chemically nickel coated (Ni-P) brass  
*Sealing* FPM  
*Internal components* Stainless steel  
*Seat* Stainless steel  
*Core tube* Stainless steel  
*Shading coil* Copper

► **COIL**

*Approval* UL (class F) – for UL cl.H: ZA34  
*ED* 100%  
*Encapsulation material* PPS (Polyphenylsulfure) fiberglass reinforced  
*Insulation class* F (155°C) on request class H (180°C)  
*Ambient temperature* -10°C +50°C  
*Electric connections* DIN 46340 - 3 poles connectors (DIN 43650)  
*Protection degree* IP 67 (EN 60529) with plug connector  
*Voltages DC* 12-24V (+10% -5%)  
*AC* 24V/50Hz - 110V/50Hz (120V/60Hz) - 230V/50Hz (+10% -15%)  
 (Other voltages and frequencies on request)

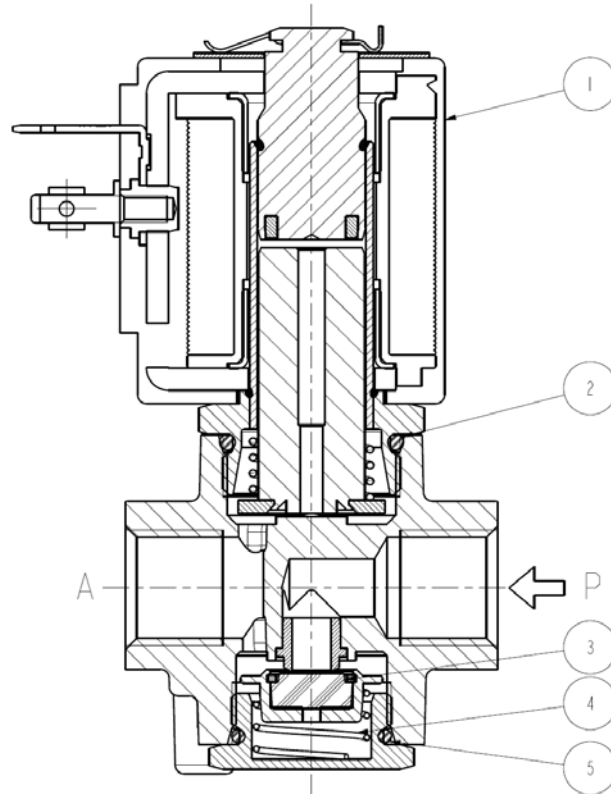
Port size ISO 228	Orifice size (mm)	Differential pressure (bar)				Kv (m <sup>3</sup> /h)	Series and type		Power absorption			Sealings	Notes	Weight (kg)	
		Δp min	Δp max				Valve	Coil	AC (VA)		DC. (W)				
			Gases		Liquids				Inrush	Holding					
			AC	DC	AC										DC
G 1/4	3,2	0	4	4	4	4	L256V12	ZA10A	23	14	9	FPM	1		
			4	4	4	4							0,340		
			2,5	2,5	2,5	2,5							0,45	L256V14	L256V12

► **NOTES**

- Sealings : FPM = Fluoro-carbon elastomer
- IMQ CSV approval, see ZA10 datasheet for further details
- UL approved coil (E153691)
- 1 - Only for use with steam, consider following values: max pressure 2,8 bar (max fluid temperature 130°C).
- 2 - Chemically nickel coated (Ni-P) brass body.

# L256V

## ► SPARE PARTS



### Kit description

Sealing assembly kit

OR guide assembly kit

OR cap kit

Coil

### Kit P.N.

G3124301

GU2424000017

GU2424000155

ZA10A

### Consisting of:

Sealing group pos.3  
Sealing return spring pos.4  
OR cap pos. 5

N°.10 OR guide assembly pos. 2

N°.10 OR cap pos.5

Coil pos.1

## ► INSTALLATION

Solenoid valve can be mounted in any position; vertical with coil upwards preferred.

THE VALIDITY OF REPORTED DATA IS REFERRED TO THE DATE OF ISSUE. POSSIBLE UPDATES ARE AVAILABLE ON REQUEST.