



Mens, Maatwerk & Techniek
Professionals in Flow & Fluid Technology

Bestel eenvoudig uw persluchtproducten
Zowel offline als online
30.000 producten!



Perslucht Catalogus 2017
Ook online www.aimfluid.nl



MENS, MAATWERK & TECHNIEK

Professionals in Flow & Fluid Technology

Gewoon

www.aimfluid.nl

| ALS JE DOOR DE BOMEN HET BOS NIET MEER ZIET |

aim biedt uitkomst

 	Pagina 364	Draadfittingen - RVS AISI-316	 	Pagina 374	Naaldafsluiters - RVS AISI-316
 	Pagina 366	Pijpnippels - RVS AISI-316	 	Pagina 375	EFFEBI kogelafsluiters - RVS AISI-316
 	Pagina 368	Draadfittingen NPT - RVS AISI-316		Pagina 376	Snijringkoppelingen DIN 2353 - RVS AISI-316
 	Pagina 369	Slangpilaren - RVS AISI-316	 	Pagina 385	Hydrauliek adapters - RVS AISI-316
 	Pagina 371	Flenzen - RVS AISI-316	 	Pagina 387	Hogedruk draadfittingen - RVS AISI-316L
 	Pagina 371	Lasfittingen - RVS AISI-316	 	Pagina 389	Opsteekkoppelingen - RVS AISI-316L
 	Pagina 373	AIR-PRO kogelafsluiters - RVS AISI-316	 	Pagina 390	AIGNEP push-in koppelingen - RVS AISI-316L
 	Pagina 374	Y-vuilvergangers - RVS AISI-316	 	Pagina 391	KELM push-in koppelingen - RVS AISI-316

Draadfittingen - RVS AISI-316



Hoogwaardige industriële kwaliteit.

Materiaal: RVS AISI-316 (1.4404) = Cr,16-18% Ni,10-14%, Mn,2% max, Mo,2-3% max, Si,1% max, C,0,08% max, P,0,045% max, S,0,03% max

Normering: BSPT-Conisch schroefdraad, BS21;ISO 7.1; DIN-2999 (A4 = RVS AISI-316)
BSP-Paralleel schroefdraad, BS2779;ISO 228

Veiligheidsfactor: 4

Temperatuur:
-20°C tot 290°C

Maximale werkdruk:
10 bar



Dubbele nippel

Tech Data
1804



BSPT male

RVSK	BSPT	€
HN-18	1/8"	2.35
HN-14	1/4"	2.45
HN-38	3/8"	2.95
HN-12	1/2"	3.50
HN-34	3/4"	4.50
HN-1	1"	6.60
HN-114	1.1/4"	9.20
HN-112	1.1/2"	10.65
HN-2	2"	15.25
HN-212	2.1/2"	25.70
HN-3	3"	37.55
HN-4	4"	61.35

Verlooping

Tech Data
1810



BSPT male/BSP female

RVSK	BSPT	BSP	€
RB-14-18	1/4"	1/8"	1.95
RB-38-14	3/8"	1/4"	2.60
RB-38-18	3/8"	1/8"	2.35
RB-12-18	1/2"	1/8"	2.45
RB-12-14	1/2"	1/4"	2.85
RB-12-38	1/2"	3/8"	2.85
RB-34-14	3/4"	1/4"	3.85
RB-34-38	3/4"	3/8"	3.90
RB-34-12	3/4"	1/2"	3.95
RB-1-14	1"	1/4"	5.00
RB-1-38	1"	3/8"	5.15
RB-1-12	1"	1/2"	5.60
RB-1-34	1"	3/4"	5.70
RB-114-12	1.1/4"	1/2"	8.45
RB-114-34	1.1/4"	3/4"	7.80
RB-114-1	1.1/4"	1"	8.05
RB-112-12	1.1/2"	1/2"	10.30
RB-112-34	1.1/2"	3/4"	10.05
RB-112-1	1.1/2"	1"	10.15
RB-112-114	1.1/2"	1.1/4"	10.05
RB-2-12	2"	1/2"	17.50
RB-2-34	2"	3/4"	17.25
RB-2-1	2"	1"	17.40
RB-2-114	2"	1.1/4"	14.55
RB-2-112	2"	1.1/2"	15.85
RB-212-1	2.1/2"	1"	30.30
RB-212-114	2.1/2"	1.1/4"	26.55
RB-212-112	2.1/2"	1.1/2"	26.60
RB-212-2	2.1/2"	2"	27.20
RB-3-1	3"	1"	36.75
RB-3-114	3"	1.1/4"	37.65
RB-3-112	3"	1.1/2"	38.85
RB-3-2	3"	2"	39.05
RB-3-212	3"	2.1/2"	39.80
RB-4-3	4"	3"	69.85

Sok

Tech Data
1815



Doorlopend draad - BSP female

RVSK	BSP	€
FS-18	1/8"	2.20
FS-14	1/4"	2.35
FS-38	3/8"	2.55
FS-12	1/2"	3.00
FS-34	3/4"	4.75
FS-1	1"	7.80
FS-114	1.1/4"	10.30
FS-112	1.1/2"	14.65
FS-2	2"	22.05
FS-212	2.1/2"	44.15
FS-3	3"	55.10
FS-4	4"	84.80

Verloopnippel

Tech Data
1811



BSPT male

RVSK	BSPT	BSP	€
RHN-14-18	1/4"	1/8"	3.20
RHN-38-18	3/8"	1/8"	3.40
RHN-38-14	3/8"	1/4"	3.45
RHN-12-18	1/2"	1/8"	4.15
RHN-12-38	1/2"	3/8"	4.65
RHN-12-14	1/2"	1/4"	4.65
RHN-34-18	3/4"	1/8"	5.30
RHN-34-14	3/4"	1/4"	5.35
RHN-34-38	3/4"	3/8"	5.50
RHN-34-12	3/4"	1/2"	5.60
RHN-1-14	1"	1/4"	7.40
RHN-1-38	1"	3/8"	7.60
RHN-1-12	1"	1/2"	8.05
RHN-1-34	1"	3/4"	8.35
RHN-114-12	1.1/4"	1/2"	10.05
RHN-114-34	1.1/4"	3/4"	10.70
RHN-114-1	1.1/4"	1"	10.65
RHN-112-12	1.1/2"	1/2"	12.70
RHN-112-34	1.1/2"	3/4"	13.00
RHN-112-1	1.1/2"	1"	13.40
RHN-112-114	1.1/2"	1.1/4"	15.20
RHN-2-12	2"	1/2"	20.55
RHN-2-34	2"	3/4"	19.95
RHN-2-1	2"	1"	20.10
RHN-2-114	2"	1.1/4"	20.50
RHN-2-112	2"	1.1/2"	20.65

Halve sok

Tech Data
1816



BSP female

RVSK	BSP	€
HS-18	1/8"	1.85
HS-14	1/4"	1.85
HS-38	3/8"	1.90
HS-12	1/2"	2.55
HS-34	3/4"	3.00
HS-1	1"	4.05
HS-114	1.1/4"	7.80
HS-112	1.1/2"	9.10
HS-2	2"	12.20
HS-212	2.1/2"	21.25
HS-3	3"	28.75
HS-4	4"	42.80

Verloopsok

Tech Data
1802



BSP female

RVSK	BSPP	BSPP	€
FRS-14-18	1/4"	1/8"	2.85
FRS-38-18	3/8"	1/8"	3.45
FRS-38-14	3/8"	1/4"	3.05
FRS-12-18	1/2"	1/8"	3.85
FRS-12-14	1/2"	1/4"	4.30
FRS-12-38	1/2"	3/8"	4.30
FRS-34-18	3/4"	1/8"	5.25
FRS-34-14	3/4"	1/4"	5.35
FRS-34-38	3/4"	3/8"	5.70
FRS-34-12	3/4"	1/2"	5.85
FRS-1-14	1"	1/4"	8.70
FRS-1-38	1"	3/8"	9.30
FRS-1-12	1"	1/2"	9.70
FRS-1-34	1"	3/4"	9.70
FRS-114-12	1.1/4"	1/2"	11.30
FRS-114-34	1.1/4"	3/4"	12.85
FRS-114-1	1.1/4"	1"	14.55
FRS-112-12	1.1/2"	1/2"	18.05
FRS-112-34	1.1/2"	3/4"	16.25
FRS-112-1	1.1/2"	1"	15.20
FRS-112-114	1.1/2"	1.1/4"	18.90
FRS-2-12	2"	1/2"	25.15
FRS-2-34	2"	3/4"	25.50
FRS-2-1	2"	1"	26.45
FRS-2-114	2"	1.1/4"	30.40
FRS-2-112	2"	1.1/2"	33.90
FRS-212-1	2.1/2"	1"	40.25
FRS-212-114	2.1/2"	1.1/4"	41.20
FRS-212-2	2.1/2"	2"	45.05
FRS-3-1	3"	1"	48.60
FRS-3-114	3"	1.1/4"	52.50
FRS-3-112	3"	1.1/2"	56.75
FRS-3-2	3"	2"	61.90
FRS-3-212	3"	2.1/2"	64.80
FRS-4-112	4"	1.1/2"	81.05
FRS-4-2	4"	2"	82.65
FRS-4-212	4"	2.1/2"	84.00
FRS-4-3	4"	3"	85.35

Knie 90°

Tech Data
1797



BSP female

RVSK	BSPP	€
EE-18	1/8"	1.80
EE-14	1/4"	2.50
EE-38	3/8"	3.65
EE-12	1/2"	4.40
EE-34	3/4"	6.60
EE-1	1"	10.50
EE-114	1.1/4"	15.50
EE-112	1.1/2"	19.25
EE-2	2"	29.50
EE-212	2.1/2"	47.10
EE-3	3"	71.15
EE-4	4"	117.55

Knie 45°

Tech Data
1796



BSP female

RVSK	BSPP	€
OE-18	1/8"	3.45
OE-14	1/4"	3.45
OE-38	3/8"	3.85
OE-12	1/2"	4.05
OE-34	3/4"	5.75
OE-1	1"	8.80
OE-114	1.1/4"	12.55
OE-112	1.1/2"	18.55
OE-2	2"	25.90
OE-212	2.1/2"	46.20
OE-3	3"	60.75
OE-4	4"	101.35

Tech Data
1798



BSPT male/BSP female

RVSK	BSPT	BSPP	€
SE-18	1/8"	1/8"	3.40
SE-14	1/4"	1/4"	3.45
SE-38	3/8"	3/8"	4.05
SE-12	1/2"	1/2"	4.75
SE-34	3/4"	3/4"	6.50
SE-1	1"	1"	8.70
SE-114	1.1/4"	1.1/4"	14.00
SE-112	1.1/2"	1.1/2"	17.85
SE-2	2"	2"	27.15
SE-212	2.1/2"	2.1/2"	47.65
SE-3	3"	3"	80.10
SE-4	4"	4"	129.70

Te

Tech Data
1799



BSP female

RVSK	BSPP	€
ET-18	1/8"	3.85
ET-14	1/4"	3.95
ET-38	3/8"	4.60
ET-12	1/2"	5.60
ET-34	3/4"	7.80
ET-1	1"	11.45
ET-114	1.1/4"	17.10
ET-112	1.1/2"	21.95
ET-2	2"	33.05
ET-212	2.1/2"	64.80
ET-3	3"	100.15
ET-4	4"	168.45

Plug

Tech Data
1806



Hol/zeskant - BSPT male

RVSK	BSPT	€
HP-18	1/8"	1.95
HP-14	1/4"	2.00
HP-38	3/8"	2.05
HP-12	1/2"	2.95
HP-34	3/4"	4.50
HP-1	1"	6.45
HP-114	1.1/4"	9.30
HP-112	1.1/2"	11.60
HP-2	2"	19.25
HP-212	2.1/2"	32.60
HP-3	3"	53.00
HP-4	4"	71.00

Tech Data
1814



Hol/vierkante kop - BSPT male

RVSK	BSPT	€
SP-18	1/8"	1.60
SP-14	1/4"	1.80
SP-38	3/8"	1.95
SP-12	1/2"	2.55
SP-34	3/4"	3.20
SP-1	1"	5.50
SP-114	1.1/4"	6.75
SP-112	1.1/2"	8.60
SP-2	2"	14.30
SP-212	2.1/2"	24.65
SP-3	3"	31.05
SP-4	4"	42.80

Nippel

Tech Data
1801

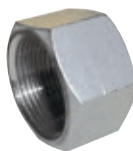


Doorlopend draad - BSP male

RVSK	BSPP	€
CPN-38	3/8"	2.85
CPN-12	1/2"	3.95
CPN-34	3/4"	5.95
CPN-1	1"	8.80
CPN-114	1.1/4"	12.05
CPN-112	1.1/2"	16.15
CPN-2	2"	25.55
CPN-212	2.1/2"	44.80
CPN-3	3"	53.80

Kap

Tech Data
1805



Zeskant - BSP female

RVSK	BSPP	€
HBC-18	1/8"	2.20
HBC-14	1/4"	2.30
HBC-38	3/8"	2.35
HBC-12	1/2"	3.30
HBC-34	3/4"	4.40
HBC-1	1"	5.60
HBC-114	1.1/4"	10.05
HBC-112	1.1/2"	11.60
HBC-2	2"	18.70
HBC-212	2.1/2"	33.70
HBC-3	3"	48.60
HBC-4	4"	76.65

Tech Data
1812



Rond - BSP female

RVSK	BSPP	€
RC-18	1/8"	2.20
RC-14	1/4"	2.30
RC-38	3/8"	2.35
RC-12	1/2"	2.95
RC-34	3/4"	4.40
RC-1	1"	5.60
RC-114	1.1/4"	9.30
RC-112	1.1/2"	11.60
RC-2	2"	17.10
RC-212	2.1/2"	30.30
RC-3	3"	42.10
RC-4	4"	61.80

Contramoeer

Tech Data
1809



BSP female

RVSK	BSPP	€
LN-18	1/8"	1.85
LN-14	1/4"	1.95
LN-38	3/8"	2.20
LN-12	1/2"	2.55
LN-34	3/4"	3.05
LN-1	1"	3.75
LN-114	1.1/4"	4.85
LN-112	1.1/2"	6.10
LN-2	2"	8.70
LN-212	2.1/2"	18.30
LN-3	3"	23.30
LN-4	4"	38.85

Pijpnippel

Tech Data
1803



BSPT male

RVSK	BSPT	L mm	€
BN-18	1/8"	30	2.85
BN-18X40	1/8"	40	2.95
BN-14	1/4"	40	3.00
BN-38	3/8"	40	3.20
BN-12	1/2"	60	4.15
BN-34	3/4"	60	4.90
BN-1	1"	60	7.30
BN-114	1.1/4"	80	13.30
BN-112	1.1/2"	80	14.65
BN-2	2"	100	23.55
BN-212	2.1/2"	100	34.45
BN-3	3"	120	52.70
BN-4	4"	120	75.40

Driedelige koppeling

Tech Data
1808



Bolconisch dichtend - BSPT male/BSP female

RVSK	BSPT	BSPP	€
MFU-18	1/8"	1/8"	8.80
MFU-14	1/4"	1/4"	9.20
MFU-38	3/8"	3/8"	11.45
MFU-12	1/2"	1/2"	11.15
MFU-34	3/4"	3/4"	15.20
MFU-1	1"	1"	21.55
MFU-114	1.1/4"	1.1/4"	27.95
MFU-112	1.1/2"	1.1/2"	34.30
MFU-2	2"	2"	52.05
MFU-212	2.1/2"	2.1/2"	89.85
MFU-3	3"	3"	131.35
MFU-4	4"	4"	182.80

Kruissok

Tech Data
1800



BSP female

RVSK	BSPP	€
EC-18	1/8"	4.90
EC-14	1/4"	6.00
EC-38	3/8"	7.60
EC-12	1/2"	9.15
EC-34	3/4"	12.35
EC-1	1"	16.65
EC-114	1.1/4"	26.45
EC-112	1.1/2"	31.05
EC-2	2"	47.20
EC-3	3"	125.50

Driedelige koppeling

Tech Data
1807



Bolconisch dichtend - BSP female

RVSK	BSPP	€
HU-18	1/8"	6.85
HU-14	1/4"	7.10
HU-38	3/8"	8.35
HU-12	1/2"	9.40
HU-34	3/4"	13.00
HU-1	1"	18.80
HU-114	1.1/4"	24.70
HU-112	1.1/2"	30.65
HU-2	2"	46.30
HU-212	2.1/2"	72.15
HU-3	3"	104.70
HU-4	4"	168.95

Bocht 90°



BSP male

RVSK	BSPP	€
B90-18	1/8"	8.35
B90-14	1/4"	10.05
B90-38	3/8"	14.00
B90-12	1/2"	17.35
B90-34	3/4"	27.95
B90-1	1"	42.50
B90-114	1.1/4"	72.75
B90-112	1.1/2"	91.90
B90-2	2"	141.15

Y-sok



BSP female

RVSK	BSPP	€
Y-14	1/4"	2.50
Y-38	3/8"	4.05
Y-12	1/2"	5.70
Y-34	3/4"	7.60
Y-1	1"	12.70
Y-114	1.1/4"	17.85
Y-112	1.1/2"	21.70
Y-2	2"	32.30
Y-212	2.1/2"	56.65
Y-3	3"	97.40
Y-4	4"	147.50

Knie



Met montageplaat - BSP female

RVSK	BSPP	€
WEP-12	1/2"	7.20

Voor

RVS terugslagkleppen



...zie hoofdstuk 4

KELM™
pneumatiek

Hydrauliek

Snel-
koppelingen

Atsluiters

Roestvast
staal

Fittingen

Lucht-
conditionering

Gereedschap

Pneumatiek

Diversen

Malleabele
fittingen
& staal

Ringleiding-
systemen

Slangen

Compressoren

Draadfittingen NPT - RVS AISI-316



Dubbele nippel

Tech Data
1804



NPT male



NPT	1/8"	2.85
NPT62001010	1/8"	2.85
NPT62001313	1/4"	2.85
NPT62001717	3/8"	3.30
NPT62002121	1/2"	4.15
NPT62002727	3/4"	4.90
NPT62003232	1"	7.60
NPT62004242	1.1/4"	10.40
NPT62004848	1.1/2"	11.80
NPT62006060	2"	16.75
NPT62007676	2.1/2"	28.15
NPT62008989	3"	40.45
NPT62000114	4"	70.85

Sok

Tech Data
1815



NPT female



NPT	1/8"	2.55
NPT62061010	1/8"	2.55
NPT62061313	1/4"	2.85
NPT62061717	3/8"	2.85
NPT62062121	1/2"	3.45
NPT62062727	3/4"	5.40
NPT62063232	1"	8.70
NPT62064242	1.1/4"	11.75
NPT62064848	1.1/2"	16.25
NPT62066060	2"	24.25
NPT62067676	2.1/2"	48.35
NPT62068989	3"	60.60
NPT62060114	4"	93.20

Verloopring

Tech Data
1810



NPT male/female



NPT	1/4"	1/8"	2.05
NPT62041310	1/4"	1/8"	2.05
NPT62041713	3/8"	1/4"	2.45
NPT62042117	1/2"	3/8"	3.20
NPT62042721	3/4"	1/2"	4.30
NPT62043227	1"	3/4"	6.35
NPT62044232	1.1/4"	1"	9.00
NPT62044842	1.1/2"	1.1/4"	11.15
NPT62046048	2"	1.1/2"	17.30
NPT62047660	2.1/2"	2"	29.80
NPT62048976	3"	2.1/2"	43.70

Plug

Tech Data
1806



Zeskant - NPT male



NPT	1/8"	2.05
NPT62181000	1/8"	2.05
NPT62181300	1/4"	2.20
NPT62181700	3/8"	2.30
NPT62182100	1/2"	3.30
NPT62182700	3/4"	4.90
NPT62183200	1"	6.95
NPT62184200	1.1/4"	10.15
NPT62184800	1.1/2"	12.70
NPT62186000	2"	21.15
NPT62187600	2.1/2"	35.70
NPT62188900	3"	58.45
NPT62180114	4"	78.00



KELM™
pneumatiek

Hydrauliek

Snel-
koppelingen

Afsluiters

Roestvast
staal

Fittingen

Lucht-
conditionering

Gereedschap

Pneumatiek

Diversen

Malleabele
fittingen &
staal

Ringleiding-
systemen

Stangen

Compressoren

Slangpilaren



Hoogwaardige industriële kwaliteit.

Normering: BSPT-Conische schroefdraad, BS21;ISO 7.1; DIN-2999, BSP-Parallel schroefdraad, BS2779;ISO 228.

Veiligheidsfactor: 4

Temperatuur:
-20°C tot 290°C

Maximale werkdruk:
10 bar

Slangpilaren - RVS AISI-316

Tech Data
1795



Slangpilaar inschroef - BSPT male

RVSK	To Suit Hose I.D. mm	BSPT	€
HT-18	4	1/8"	3.85
HT-18-6	6	1/8"	3.75
HT-14	6	1/4"	4.60
HT-14-08	8	1/4"	4.35
HT-14-10	10	1/4"	4.80
HT-14-13	13	1/4"	4.65
HT-38-08	8	3/8"	5.75
HT-38	10	3/8"	5.75
HT-38-13	13	3/8"	6.40
HT-12-10	10	1/2"	9.90
HT-12	13	1/2"	10.50
HT-12-19	19	1/2"	10.90
HT-12-25	25	1/2"	15.55
HT-34-13	13	3/4"	13.40
HT-34	19	3/4"	15.30
HT-1-19	19	1"	26.85
HT-1	25	1"	20.40
HT-1-31	31	1"	24.15
HT-114	31	1.1/4"	15.00
HT-112	38	1.1/2"	22.75
HT-2	50	2"	34.85
HT-212	63	2.1/2"	52.05
HT-3	75	3"	65.30
HT-4	100	4"	134.65

Tech Data
2077



Slangpilaar opschroef - BSP female

RVSK	To Suit Hose I.D. mm	BSPP	€
SFHT10/06	6	1/8"	8.35
SFHT13/06	6	1/4"	9.80
SFHT13/09	9	1/4"	9.80
SFHT17/10	10	3/8"	11.90
SFHT21/13	13	1/2"	15.45
SFHT26/19	19	3/4"	18.90
SFHT33/25	25	1"	23.00
SFHT42/32	32	1.1/4"	30.10
SFHT48/38	38	1.1/2"	47.90
SFHT52/51	51	2"	60.70



Slangpilaren hogedruk - RVS AISI-316L

Temperatuur:
tot 225°C

Maximale werkdruk:
tot 140 bar



Slangpilaar inschroef - BSPT male - dikwandig gedraaid

Tech Data
20779



Slangpilaar opschroef met wartel - BSP female 60° bolconus

RVSK	To Suit Hose I.D. mm	BSPP	€
FH13/14SS	6	1/4"	5.50
FH17/38SS	10	3/8"	8.60
FH21/12SS	13	1/2"	11.75
FH26/34SS	19	3/4"	16.60

Tech Data
20778



Verbindingslangpilaar

RVSK	To Suit Hose I.D. mm	€
DS06-SS	6	3.95
DS08-SS	8	4.35
DS10-SS	10	4.65
DS13-SS	13	5.30

RVSD	To Suit Hose I.D. mm	BSPT	mm	mm	H mm	€
60190610	6	1/8"	19.5	11	32	8.10
60190710	7	1/8"	19.5	11	32	8.15
60190713	7	1/4"	19.5	14	35.5	10.00
60190813	8	1/4"	19.5	14	35.5	9.90
60190913	9	1/4"	19.5	14	35.5	10.00
60190917	9	3/8"	19.5	17	36	12.90
60191013	10	1/4"	19.5	14	35.5	9.90
60191017	10	3/8"	19.5	17	36	11.30
60191021	10	1/2"	19.5	22	39	16.05
60191213	12	1/4"	19.5	14	39	19.10
60191217	12	3/8"	19.5	17	36	11.30
60191221	12	1/2"	19.5	22	39	19.10
60191417	14	3/8"	19.5	17	36	12.65
60191421	14	1/2"	19.5	22	39	19.10
60191621	16	1/2"	19.5	22	39	19.25
60191821	18	1/2"	19.5	22	39	19.50
60191827	18	3/4"	19.5	27	43.5	27.50
60192021	20	1/2"	19.5	22	39	20.20
60192027	20	3/4"	19.5	27	40	27.50

Hoofdstuk 5 - Roestvast staal

KELM™
pneumatiek

Hydrauliek

Snel-
koppelingen

Atsluiters

Roestvast
staal

Fittingen

Lucht-
conditionering

Gereedschap

Pneumatiek

Diversen

Malleabele
fittingen
& staal

Ringleiding-
systemen

Slangen

Compressoren

RVS draadfittingen



Algemeen

- RVS AISI-316 draadfittingen voor algemene toepassingen.
- Uitgebreide reeks fittingen voor lage druk toepassingen, algemeen bekend als 150lb klasse fittingen
- Maten 1/8 "tot 4".
- Hydrostatische druk test tot 15 bar.
- Corrosiebestendig.
- Female draden zijn BSP (Rp) parallel en male draden zijn BSPT (R) taper.



Normen

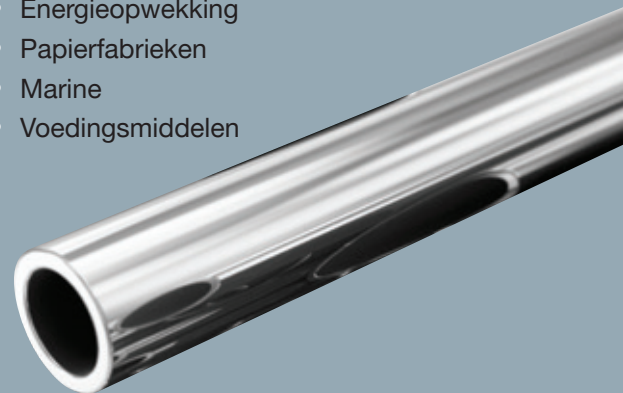
- Geproduceerd volgens BS1740 met een hoge kwaliteit afwerking.
- Draden zijn conform B2.1, afmetingen zijn conform ANSI 16.3.
- Roestvast staal conform ASTM A351, graad 316.

Gebruik

- Petrochemie
- Raffinaderijen
- Farmaceutisch
- Water en Riolering
- Energieopwekking
- Papierfabrieken
- Marine
- Voedingsmiddelen

Voordelen

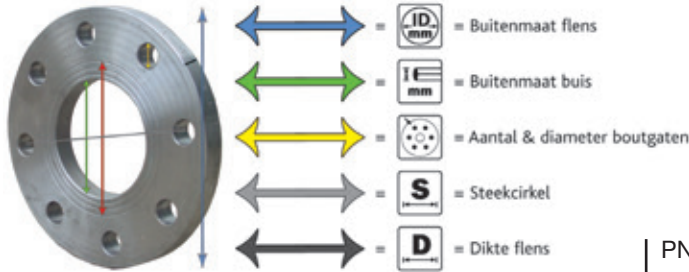
- Anti-Corrosie
- Sterk
- Cryogeen
- Hygiënisch



Flenzen - RVS AISI-316



Draadflenzen DIN 2566



PN16

FLAS	S	D	W	ID (mm)	I (mm)	Boutgaten	€
SSFT-DN015-16	65	14	1/2"	95	21.3	4 x 14mm	37.40
SSFT-DN020-16	75	16	3/4"	105	26.9	4 x 14mm	55.55
SSFT-DN025-16	85	16	1"	115	33.7	4 x 14mm	68.20
SSFT-DN032-16	100	16	1.1/4"	140	42.4	4 x 18mm	102.35
SSFT-DN040-16	110	16	1.1/2"	150	48.3	4 x 18mm	119.30
SSFT-DN050-16	125	18	2"	165	60.3	4 x 18mm	136.45
SSFT-DN065-16	145	18	2.1/2"	185	76.1	4 x 18mm	170.15
SSFT-DN080-16	160	20	3"	200	88.9	8 x 18mm	219.00
SSFT-DN100-16	180	20	4"	220	114.3	8 x 18mm	244.45

Lasfittingen - RVS AISI-316



Lasnippel

Tech Data
1813



BSPT male

RVSK	BSPT	L (mm)	€
WN-18X30	1/8"	30	2.05
WN14X30	1/4"	30	2.25
WN-38	3/8"	30	2.60
WN-12	1/2"	35	3.20
WN-34	3/4"	40	4.10
WN-1	1"	40	5.50
WN-114	1.1/4"	50	9.25
WN-112	1.1/2"	50	11.10
WN-2	2"	50	14.65

Lasbocht

Tech Data
60000



45°

RVSK	ID (mm)	€
SBW1-12	1/2"	5.25
SBW1-34	3/4"	6.05
SBW1-1	1"	9.40
SBW1-114	1.1/4"	10.80
SBW1-112	1.1/2"	16.45
SBW1-2	2"	22.55

Tech Data
60001



90°

RVSK	ID (mm)	€
SBW2-12	1/2"	7.70
SBW2-34	3/4"	9.40
SBW2-1	1"	12.20
SBW2-114	1.1/4"	16.15
SBW2-112	1.1/2"	21.95
SBW2-2	2"	35.05

Hoofdstuk 5 – Roestvast staal

KELM™
pneumatiek

Hydrauliek

Snel-
koppelingen

Atsluiters

Roestvast
staal

Fittingen

Lucht-
conditionering

Gereedschap

Pneumatiek

Diversen

Malleabele
fittingen
& staal

Ringleiding-
systemen

Slangen

Compressoren

Kogelafsluiters - RVS AISI-316



RVS

Hoofdstuk 5 – Roestvast staal

Eendelige kogelafsluiters

Temperatuur: -20°C tot 200°C
Maximale werkdruk: 63 bar (PN63)
 Gereduceerd PTFE

Tech Data 1965



BSP female - met vergrendeling

RVSA	BSPP	€
65031313	1/4"	18.30
65031717	3/8"	20.20
65032121	1/2"	25.20
65032727	3/4"	27.40
65033232	1"	36.75
65034242	1.1/4"	56.00
65034848	1.1/2"	71.45
65036060	2"	87.75

Tweedelige kogelafsluiters

Temperatuur: -20°C tot 200°C
Maximale werkdruk: 150 bar (PN150)
 Vol PTFE

Tech Data 1967



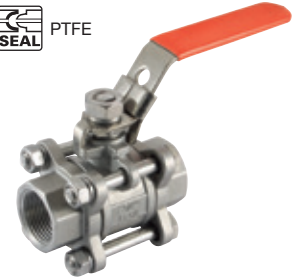
BSP female - met vergrendeling

RVSA	BSPP	€
65041313	1/4"	27.00
65041717	3/8"	27.00
65042121	1/2"	32.75
65042727	3/4"	42.60
65043232	1"	56.85
65044242	1.1/4"	86.30
65044848	1.1/2"	127.55
65046060	2"	181.15

Driedelige kogelafsluiters

Temperatuur: -20°C tot 200°C
Maximale werkdruk: 63 bar (PN63)
 Vol PTFE

Tech Data 1968



BSP female - met vergrendeling

RVSA	BSPP	€
65061313	1/4"	39.10
65061717	3/8"	37.70
65062121	1/2"	43.05
65062727	3/4"	55.70
65063232	1"	71.60
65064242	1.1/4"	106.25
65064848	1.1/2"	149.45
65066060	2"	216.70
65067676	3"	548.70
65068989	4"	994.45

Mini kogelafsluiters

Temperatuur: -20°C tot 200°C
Maximale werkdruk: 20 bar
 Gereduceerd PTFE

Huis: RVS AISI-316

Tech Data 60101



BSP female - PTFE seal - zwarte handel

0099	BSPP	€
SMBV14	1/4"	18.90
SMBV38	3/8"	18.90
SMBV12	1/2"	22.15

Werktemperatuur: -40°C tot +230°C
Werkdruk: 40 bar
 Gereduceerd Viton

Huis: RVS AISI-316

Tech Data 10333



BSP female - viton seal - blauwe handel

0099	BSPP	€
HEXSMBV14	1/4"	24.65
HEXSMBV38	3/8"	26.00
HEXSMBV12	1/2"	29.60

Tech Data 60102



BSPT male/BSP female - PTFE seal - zwarte handel

0099	BSPP	€
SMBV14M	1/4"	18.75
SMBV38M	3/8"	18.75
SMBV12M	1/2"	23.70

Tech Data 10334



BSP male/female - viton seal - blauwe handel

0099	BSPP	€
HEXSMBV14M	1/4"	26.40
HEXSMBV38M	3/8"	27.60
HEXSMBV12M	1/2"	32.50

Kogelafsluiters - RVS AISI-316



RVS

Eendelige kogelafsluiters

Temperatuur: -20°C tot +200°C
Maximale werkdruk: 63 bar (PN63)

Doorlaat: Gereduceerd
SEAL: PTFE

Tech Data
1965



BSP female - met vergrendeling

RVSA		€
BV1-14	1/4"	18.30
BV1-38	3/8"	20.20
BV1-12	1/2"	25.20
BV1-34	3/4"	27.40
BV1-1	1"	36.75
BV1-114	1.1/4"	56.00
BV1-112	1.1/2"	71.45
BV1-2	2"	87.75

Driedelige kogelafsluiters

Temperatuur: -20°C tot +200°C
Maximale werkdruk: 63 bar (PN63)

Doorlaat: Vol
SEAL: PTFE

Tech Data
1968



BSP female - met vergrendeling

RVSA		€
BV3-14	1/4"	39.10
BV3-38	3/8"	37.70
BV3-12	1/2"	43.05
BV3-34	3/4"	55.70
BV3-1	1"	71.60
BV3-114	1.1/4"	106.25
BV3-112	1.1/2"	149.45
BV3-2	2"	216.70
BV3-3	3"	548.70

Tweedelige kogelafsluiters

Temperatuur: -20°C tot +200°C
Maximale werkdruk: 63 bar (PN63)

Doorlaat: Vol
SEAL: PTFE

Tech Data
1966



BSP female - met vergrendeling

RVSA		€
BV2-14	1/4"	23.40
BV2-38	3/8"	23.20
BV2-12	1/2"	26.70
BV2-34	3/4"	37.00
BV2-1	1"	53.60
BV2-114	1.1/4"	82.90
BV2-112	1.1/2"	124.45
BV2-2	2"	176.05
BV2-212	2.1/2"	402.85

Temperatuur: -20°C tot +200°C
Maximale werkdruk: 1/4" tot 1": 150 bar (PN150)
 1.1/4" tot 2": 100 bar (PN100)

Tech Data
1967



BSP female - met vergrendeling

RVSA		€
PBV2-14	1/4"	27.00
PBV2-38	3/8"	27.00
PBV2-12	1/2"	32.75
PBV2-34	3/4"	42.60
PBV2-1	1"	56.85
PBV2-114	1.1/4"	86.30
PBV2-112	1.1/2"	127.55
PBV2-2	2"	181.15

Drieweg kogelafsluiters

Temperatuur: -20°C tot 200°C
Maximale werkdruk: 63 bar (PN63)

Doorlaat: Gereduceerd
SEAL: PTFE

Handel is 360° draaibaar en vergrendelbaar

Tech Data
1969



BSP female - L-boring - met vergrendeling

RVSA	BSPP	L mm	€
BV73-14L	1/4"	69	128.55
BV73-12L	1/2"	75	161.85
BV73-34L	3/4"	87	184.50
BV73-1L	1"	103	210.50

BSP female - T-boring - met vergrendeling

RVSA	BSPP	L mm	€
BV73-14T	1/4"	69	128.55
BV73-38T	3/8"	69	140.45
BV73-12T	1/2"	75	161.85
BV73-34T	3/4"	87	197.60
BV73-1T	1"	103	249.05

Hoofdstuk 5 - Roestvast staal

KELM™
pneumatiek

Hydrauliek

Snelkoppelingen

Atsluiters

Roestvast staal

Fittingen

Luchtconditionering

Gereedschap

Pneumatiek

Diversen

Malleabele fittingen & staal

Ringleidingssystemen

Slangen

Compressoren

Afsluiters - RVS AISI-316



RVS

Hoofdstuk 5 – Roestvast staal

Schuifafsluiters

Temperatuur: 180°C
Maximale werkdruk: 14 bar
PTFE

Tech Data 553



BSP female

0099	BSPP	€
2018-6979	1/2"	101.80
2018-6987	3/4"	121.60
2018-6995	1"	142.90
2018-7001	1.1/4"	171.20
2018-7019	1.1/2"	247.90
2018-7027	2"	305.15

Globe afsluiters

Temperatuur: -20°C tot 200°C
Maximale werkdruk: 14 bar
PTFE

Tech Data 805



BSP female

0099	BSPP	€
SGV-14	1/4"	79.75
SGV-38	3/8"	79.75
SGV-12	1/2"	86.35
SGV-34	3/4"	105.45
SGV-1	1"	132.60
SGV-114	1.1/4"	145.55

Y-vuilvergangers

Temperatuur: 100°C
Maximale werkdruk: 55 bar
PTFE

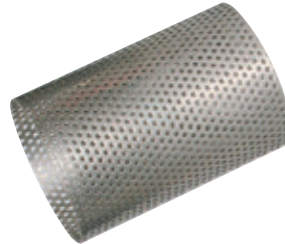
Tech Data 797



BSP female

0099	BSPP	€
2019-3953	1/4"	57.40
2019-3960	3/8"	60.25
2019-3967	1/2"	64.70
2019-3975	3/4"	78.85
2019-3983	1"	103.95
2019-3991	1.1/4"	111.35
2019-4031	1.1/2"	126.45
2019-4049	2"	230.45

1.0mm per gat, 40 gaten per vierkante inch.



RVS zeef voor AIR-PRO Y-vuilverganger

0099	DIA mm	To Suit	€
2024-7656	1/2"	2019-3967	11.15
2024-7664	3/4"	2019-3975	12.60
2024-7672	1"	2019-3983	15.70
2024-7680	1.1/4"	2019-3991	22.30
2024-7698	1.1/2"	2019-4031	37.25
2024-7706	2"	2019-4049	53.95

Industriële naaldafsluiters

Temperatuur: -25°C tot 120°C
Maximale werkdruk: 414 bar
PTFE

Tech Data 10036



BSP female - PTFE seal

0099	BSPP	€
2018-6938	1/4"	63.10
2018-6946	3/8"	79.80
2018-6953	1/2"	98.25

NPT female - PTFE seal

0099	NPTF	€
2018-6904	1/4"	63.10
2018-6912	3/8"	79.80
2018-6920	1/2"	98.25

ALBA® industriële tweedelige kogelafsluiters

Toepassing: chemische producten, petrochemie, gas, water, pneumatiek, hydrauliek, vacuüm en stoom
Certificering: DIN-DVWG voor gas MOP5 en TÜV voor TA Luft tot 2"
Huis: RVS AISI-316
Afdichtingen: PTFE - TRIPLE met labyrint effect en automatische aanpassing door Belleville dichtingen PTFE/VITON
Handel: RVS AISI-304
Schroefdraad: UNI-ISO 7/1Rp (UNI EN 10226), DIN2999 parallel of NPT female

Temperatuur:
-20°C tot +150°C

Maximale werkdruk:
1/4" en 1/2": 100 bar
3/4" en 1": 64 bar
1.1/4 tot 2": 40 bar

Vol

Tech Data
60117



BSP female

AFSK		€
65001313	1/4"	65.55
65001717	3/8"	65.55
65002121	1/2"	66.30
65002727	3/4"	87.45
65003232	1"	107.80
65004242	1.1/4"	151.45
65004848	1.1/2"	214.50
65006060	2"	317.35



NPT female

AFSK		€
NPT65001313	1/4"	69.50
NPT65001717	3/8"	69.50
NPT65002121	1/2"	70.35
NPT65002727	3/4"	92.75
NPT65003232	1"	114.30
NPT65004242	1.1/4"	160.65
NPT65004848	1.1/2"	227.80
NPT65006060	2"	337.40

SUN WP® industriële tweedelige kogelafsluiter

Toepassing: chemische producten, petrochemie, gas, water, pneumatiek, hydrauliek, vacuüm en stoom. Compleet met ISO-5211 montageplaat, voor aansluiting van een actuator.
Certificering: DIN-DVWG voor gas MOP5 en TÜV voor TA Luft tot 2"
Afdichtingen: PTFE - TRIPLE met labyrint effect en automatische aanpassing door Belleville dichtingen PTFE/VITON
Huis: RVS AISI-316
Handel: RVS AISI-304
Schroefdraad: UNI-ISO 7/1Rp (UNI EN 10226), DIN2999 parallel

Temperatuur:
-20°C tot +150°C

Maximale werkdruk:
3/8" - 1": 100 bar
1.1/4" - 1.1/2": 64 bar
2": 40 bar

Vol

Tech Data
60118



BSP female - met ISO 5211 montageplaat voor actuator

AFSK		€
65051717	3/8"	75.00
65052121	1/2"	80.50
65052727	3/4"	105.45
65053232	1"	144.45
65054242	1.1/4"	190.60
65054848	1.1/2"	255.85
65056060	2"	378.85

KELM™
pneumatiek

Hydrauliek

Snel-
koppelingen

Afsluiters

Roestvast
staal

Fittingen

Lucht-
conditionering

Gereedschap

Pneumatiek

Diversen

Malleabele
fittingen
& staal

Ringleiding-
systemen

Slangen

Compressoren

Snijringkoppelingen DIN 2353 - RVS AISI-316



Materiaal: RVS AISI-316 / DIN 4401 / ASME-SA-182.316.
Topkwaliteit voor industrie, offshore, scheepvaart etc.

Temperatuur koppeling:
-60°C tot +400°C
(daarboven vermindert de werkdruk)

Temperatuur Viton seal:
-20°C tot +200°C

Temperatuur NBR seal:
-35°C tot +100°C

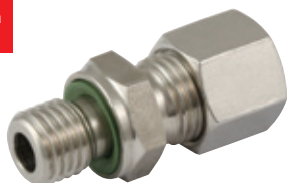
** DET NORSKE VERITAS **

Serie	Size mm	Werkdruk in bar*
	Maat in mm	
L	6 t/m 15	250
L	18 t/m 22	160
L	28	100
S	6 t/m 14	630
S	16 t/m 25	400

*Werkdruk is gebaseerd op de werkdruk van de buis.

Rechte inschroefkoppeling

Tech Data
10585



Snijring L/BSP male met Viton O-ring

RVSS	OD mm	BSPP	€
GE-6L-2EO	6	1/8"	8.40
GE-6L-4EO	6	1/4"	12.90
GE-8L-2EO	8	1/8"	10.15
GE-8L-4EO	8	1/4"	10.00
GE-8L-6EO	8	3/8"	14.05
GE-10L-4EO	10	1/4"	10.95
GE-10L-6EO	10	3/8"	15.65
GE-10L-8EO	10	1/2"	20.65
GE-12L-4EO	12	1/4"	15.85
GE-12L-6EO	12	3/8"	12.95
GE-12L-8EO	12	1/2"	19.75
GE-15L-6EO	15	3/8"	19.35
GE-15L-8EO	15	1/2"	17.90
GE-18L-8EO	18	1/2"	22.60
GE-18L-12EO	18	3/4"	31.85
GE-22L-12EO	22	3/4"	30.15
GE-28L-16EO	28	1"	47.40

Tech Data
10588 & 10589



Snijring L/NPT male

RVSS	OD mm	NPTF	€
GE-6L-2N	6	1/8"	10.70
GE-6L-4N	6	1/4"	10.95
GE-8L-4N	8	1/4"	11.85
GE-10L-4N	10	1/4"	14.05
GE-10L-6N	10	3/8"	16.25
GE-12L-4N	12	1/4"	16.55
GE-12L-6N	12	3/8"	17.45
GE-12L-8N	12	1/2"	18.25
GE-15L-8N	15	1/2"	22.70
GE-18L-8N	18	1/2"	29.65
GE-22L-12N	22	3/4"	37.90
GE-28L-16N	28	1"	55.05

Snijring S/NPT male

RVSS	OD mm	NPTF	€
GE-6S-4N	6	1/4"	12.15
GE-8S-4N	8	1/4"	14.15
GE-10S-4N	10	1/4"	16.40
GE-10S-6N	10	3/8"	16.95
GE-12S-4N	12	1/4"	18.40
GE-12S-6N	12	3/8"	19.35
GE-12S-8N	12	1/2"	18.60
GE-14S-8N	14	1/2"	22.70
GE-16S-8N	16	1/2"	31.05
GE-20S-12N	20	1/2"	39.25
GE-25S-16N	25	1"	61.55

Snijring L/BSPT male

RVSS	OD mm	BSPT	€
GE-6L-2RT	6	1/8"	10.95
GE-8L-4RT	8	1/4"	10.95
GE-10L-4RT	10	1/4"	12.80
GE-12L-4RT	12	1/4"	15.50
GE-12L-6RT	12	3/8"	15.50
GE-12L-8RT	12	1/2"	17.65
GE-15L-6RT	15	3/8"	19.90
GE-15L-8RT	15	1/2"	19.90
GE-18L-8RT	18	1/2"	25.90
GE-22L-12RT	22	3/4"	34.80

Rechte opschroefkoppeling

Tech Data
10590



Snijring L/BSP female

RVSS	OD mm	BSPP	€
GAI-6L-2RG	6	1/8"	12.75
GAI-8L-4RG	8	1/4"	16.70
GAI-8L-6RG	8	3/8"	19.10
GAI-8L-8RG	8	1/2"	24.35
GAI-10L-4RG	10	1/4"	16.70
GAI-10L-6RG	10	3/8"	20.25
GAI-10L-8RG	10	1/2"	25.05
GAI-12L-6RG	12	3/8"	19.70
GAI-12L-8RG	12	1/2"	22.95
GAI-15L-8RG	15	1/2"	26.20
GAI-18L-8RG	18	1/2"	31.50
GAI-22L-12RG	22	3/4"	40.55
GAI-28L-16RG	28	1"	57.15

Snijring S/BSP female

RVSS	OD mm	BSPP	€
GAI-6S-4RG	6	1/4"	16.80
GAI-8S-4RG	8	1/4"	17.15
GAI-10S-6RG	10	3/8"	22.70
GAI-12S-6RG	12	3/8"	23.70
GAI-14S-8RG	14	1/2"	29.65
GAI-16S-8RG	16	1/2"	31.50
GAI-20S-12RG	20	3/4"	45.55
GAI-25S-16RG	25	1"	63.40

Snijringkoppelingen DIN 2353 - RVS AISI-316



Knie inschroefkoppeling

Tech Data
10600 & 10601



Snijring L/BSPT male

RVSS	OD mm	BSPT	€
WE6L-2RT	6	1/8"	11.55
WE8L-4RT	8	1/4"	14.55
WE10L-4RT	10	1/4"	15.95
WE12L-6RT	12	3/8"	17.90
WE15L-8RT	15	1/2"	24.25
WE18L-8RT	18	1/2"	34.10

Snijring S/BSPT male

RVSS	OD mm	BSPT	€
WE6S-4RT	6	1/4"	15.40
WE8S-4RT	8	1/4"	18.75
WE10S-6RT	10	3/8"	18.05
WE12S-6RT	12	3/8"	21.55
WE14S-8RT	14	1/2"	29.65
WE16S-8RT	16	1/2"	43.10

Snijring L/NPT male

RVSS	OD mm	NPTF	€
WE6L-2N	6	1/8"	17.45
WE8L-4N	8	1/4"	20.55
WE10L-4N	10	1/4"	23.80
WE12L-6N	12	3/8"	25.65
WE15L-8N	15	1/2"	32.40
WE18L-8N	18	1/2"	44.20
WE22L-12N	22	3/4"	54.40
WE28L-16N	28	1"	102.50

Snijring S/NPT male

RVSS	OD mm	NPTF	€
WE6S-4N	6	1/4"	19.00
WE8S-4N	8	1/4"	23.00
WE10S-6N	10	3/8"	24.85
WE12S-6N	12	3/8"	30.45
WE14S-8N	14	1/2"	34.00
WE16S-8N	16	1/2"	46.85
WE20S-12N	20	3/4"	55.05
WE25S-16N	25	1"	121.50

Rechte koppeling

Tech Data
10605



Snijring L

RVSS	OD mm	€
G6-UL	6	8.45
G8-UL	8	10.60
G10-UL	10	13.10
G12-UL	12	15.10
G15-UL	15	19.90
G18-UL	18	29.65
G22-UL	22	38.60
G28-UL	28	61.30

Snijring S

RVSS	OD mm	€
G6-US	6	10.65
G8-US	8	12.70
G10-US	10	15.85
G12-US	12	17.75
G14-US	14	22.45
G16-US	16	29.45
G20-US	20	42.10
G25-US	25	69.90

Kniekoppeling

Tech Data
10607



Snijring L

RVSS	OD mm	€
W6-UEL	6	16.55
W8-UEL	8	17.40
W10-UEL	10	20.30
W12-UEL	12	23.20
W15-UEL	15	30.50
W18-UEL	18	43.70
W22-UEL	22	55.45
W28-UEL	28	102.50

Snijring S

RVSS	OD mm	€
W6-UES	6	18.05
W8-UES	8	20.75
W10-UES	10	24.65
W12-UES	12	28.00
W14-UES	14	33.65
W16-UES	16	44.20
W20-UES	20	59.15
W25-UES	25	113.20

Tee koppeling

Tech Data
10608



Snijring L

RVSS	OD mm	€
T6-UTL	6	22.80
T8-UTL	8	24.35
T10-UTL	10	28.25
T12-UTL	12	33.50
T15-UTL	15	47.55
T18-UTL	18	64.70
T22-UTL	22	91.60
T28-UTL	28	143.05

Snijring S

RVSS	OD mm	€
T6-UTS	6	25.05
T8-UTS	8	27.45
T10-UTS	10	34.00
T12-UTS	12	41.95
T14-UTS	14	46.15
T16-UTS	16	65.20
T20-UTS	20	92.85
T25-UTS	25	154.05

Kruiskoppeling

Tech Data
10609



Snijring L

RVSS	OD mm	€
K6-UCL	6	42.85
K8-UCL	8	46.95
K10-UCL	10	59.80
K12-UCL	12	63.70
K15-UCL	15	82.10
K18-UCL	18	118.70
K22-UCL	22	159.80
K28-UCL	28	219.70

Snijring S

RVSS	OD mm	€
K6-UCS	6	47.55
K8-UCS	8	60.95
K10-UCS	10	67.40
K12-UCS	12	79.25
K14-UCS	14	83.65
K16-UCS	16	113.60
K20-UCS	20	158.10
K25-UCS	25	260.10

Hoofdstuk 5 - Roestvast staal

KELM™
pneumatiek

Hydrauliek

Snel-
koppelingen

Atsluiters

Roestvast
staal

Fittingen

Lucht-
conditionering

Gereedschap

Pneumatiek

Diversen

Malleabele
fittingen
& staal

Ringleiding-
systemen

Slangen

Compressoren

Snijringkoppelingen DIN 2353 - RVS AISI-316



Schotkoppeling

Tech Data
10612



Recht - snijring L

RVSS	OD mm	€
SV-6L	6	17.85
SV-8L	8	21.10
SV-10L	10	26.15
SV-12L	12	28.60
SV-15L	15	36.95
SV-18L	18	57.40
SV-22L	22	72.70
SV-28L	28	102.50

Recht - snijring S

RVSS	OD mm	€
SV-6S	6	23.45
SV-8S	8	27.00
SV-10S	10	31.05
SV-12S	12	33.50
SV-14S	14	48.65
SV-16S	16	57.00
SV-20S	20	83.65
SV-25S	25	126.85

Tech Data
10614



Knie - snijring L

RVSS	OD mm	€
WSV-6L-FT	6	33.00
WSV-8L-FT	8	36.20
WSV-10L-FT	10	42.20
WSV-12L-FT	12	46.15
WSV-15L-FT	15	60.70
WSV-18L-FT	18	80.90
WSV-22L-FT	22	110.65
WSV-28L-FT	28	153.85

Knie - snijring S

RVSS	OD mm	€
WSV-6S-FT	6	40.80
WSV-8S-FT	8	42.05
WSV-10S-FT	10	44.30
WSV-12S-FT	12	49.00
WSV-14S-FT	14	61.55
WSV-16S-FT	16	70.10
WSV-20S-FT	20	116.05
WSV-25S-FT	25	175.45

Rechte koppeling

Tech Data
10616



Snijring L/las

RVSS	OD mm	€
AS-6L	6	8.65
AS-8L	8	9.55
AS-10L	10	11.45
AS-12L	12	11.85
AS-15L	15	15.05
AS-18L	18	24.75
AS-28L	28	47.95

Snijring S/las

RVSS	OD mm	€
AS-6S	6	11.35
AS-8S	8	12.95
AS-10S	10	14.05
AS-12S	12	14.25
AS-14S	14	19.00
AS-16S	16	25.10
AS-20S	20	35.00
AS-25S	25	54.25

Rechte inschroefkoppeling

Tech Data
10587



Snijring L/metrisch parallel male
(form B)

RVSS	OD mm		€
GE-6L-10MPB	6	M10 x 1	8.40
GE-8L-12MPB	8	M12 x 1.5	10.50
GE-8L-18MPB	8	M18 x 1.5	17.85
GE-10L-14MPB	10	M14 x 1.5	10.95
GE-10L-16MPB	10	M16 x 1.5	16.55
GE-10L-18MPB	10	M18 x 1.5	17.45
GE-10L-22MPB	10	M22 x 1.5	24.20
GE-12L-14MPB	12	M14 x 1.5	16.15
GE-12L-16MPB	12	M16 x 1.5	13.60
GE-12L-18MPB	12	M18 x 1.5	17.95
GE-12L-22MPB	12	M22 x 1.5	24.45
GE-15L-16MPB	15	M16 x 1.5	18.15
GE-15L-18MPB	15	M18 x 1.5	17.15
GE-15L-22MPB	15	M22 x 1.5	24.45
GE-18L-18MPB	18	M18 x 1.5	25.10
GE-18L-22MPB	18	M22 x 1.5	23.90
GE-22L-22MPB	22	M22 x 1.5	37.50
GE-22L-26MPB	22	M26 x 1.5	32.55
GE-28L-33MPB	28	M33 x 2	47.85

Snijring S/metrisch parallel male
(form B)

RVSS	OD mm		€
GE-6S-12MPB	6	M12 x 1.5	12.35
GE-8S-14MPB	8	M14 x 1.5	13.95
GE-10S-16MPB	10	M16 x 1.5	15.15
GE-12S-18MPB	12	M18 x 1.5	15.95
GE-12S-22MPB	12	M22 x 1.5	19.00
GE-14S-20MPB	14	M20 x 1.5	19.75
GE-16S-18MPB	16	M18 x 1.5	26.45
GE-16S-22MPB	16	M22 x 1.5	24.25
GE-20S-27MPB	20	M27 x 2	34.30
GE-25S-33MPB	25	M33 x 2	54.40

Snijringkoppelingen DIN 2353 - RVS AISI-316



Hoofdstuk 5 – Roestvast staal

Verstelbare barrel tee koppeling

Tech Data
10597



Snijring L

RVSS	OD mm	€
EVL-6L	6	31.90
EVL-8L	8	35.20
EVL-10L	10	39.65
EVL-12L	12	46.30
EVL-15L	15	62.95
EVL-18L	18	100.15
EVL-22L	22	108.10
EVL-28L	28	186.70

Snijring S

RVSS	OD mm	€
EVL-6S	6	33.60
EVL-8S	8	37.60
EVL-10S	10	48.25
EVL-12S	12	53.70
EVL-14S	14	63.60
EVL-16S	16	100.15
EVL-20S	20	121.85
EVL-25S	25	205.45

Verstelbare knie inschroefkoppeling

Tech Data
10603



Snijring L/metrisch parallel male (form B)

RVSS	OD mm	€	
EVW-6L-10MPB	6	M10 x 1	23.55
EVW-8L-12MPB	8	M12 x 1.5	25.90
EVW-10L-14MPB	10	M14 x 1.5	32.25
EVW-12L-16MPB	12	M16 x 1.5	38.85
EVW-15L-18MPB	15	M18 x 1.5	50.20
EVW-18L-22MPB	18	M22 x 1.5	71.10
EVW-22L-26MPB	22	M26 x 1.5	87.95
EVW-28L-33MPB	28	M33 x 2	129.75

Snijring S/metrisch parallel male (form B)

RVSS	OD mm	€	
EVW-6S-12MPB	6	M12 x 1.5	30.35
EVW-8S-14MPB	8	M14 x 1.5	35.20
EVW-10S-16MPB	10	M16 x 1.5	40.05
EVW-12S-18MPB	12	M18 x 1.5	45.90
EVW-14S-20MPB	14	M20 x 1.5	55.45
EVW-16S-22MPB	16	M22 x 1.5	71.20
EVW-20S-27MPB	20	M27 x 2	91.05
EVW-25S-33MPB	25	M33 x 2	137.80

Verstelbare tee inschroefkoppeling

Tech Data
10596



Snijring L/metrisch parallel male (form B)

RVSS	OD mm	€	
EVT-6L-10MPB	6	M10 x 1	35.70
EVT-8L-12MPB	8	M12 x 1.5	40.65
EVT-10L-14MPB	10	M14 x 1.5	45.90
EVT-12L-16MPB	12	M16 x 1.5	55.05
EVT-15L-18MPB	15	M18 x 1.5	75.15
EVT-18L-22MPB	18	M22 x 1.5	97.15
EVT-22L-26MPB	22	M15 x 1.5	125.70
EVT-28L-33MPB	33	M33 x 2	223.75

Snijring S/metrisch parallel male (form B)

RVSS	OD mm	€	
EVT-6S-12MPB	6	M12 x 1.5	40.30
EVT-8S-14MPB	8	M14 x 1.5	46.75
EVT-10S-16MPB	10	M16 x 1.5	55.45
EVT-12S-18MPB	12	M18 x 1.5	64.35
EVT-14S-20MPB	14	M20 x 1.5	73.00
EVT-16S-22MPB	16	M22 x 1.5	98.85
EVT-20S-27MPB	20	M27 x 2	140.25
EVT-25S-33MPB	25	M33 x 2	248.00

Tech Data
10595



Snijring L/BSP male (form B)

RVSS	OD mm	€	
EVT-6L-2RP	6	1/8"	35.70
EVT-8L-4RP	8	1/4"	40.25
EVT-10L-4RP	10	1/4"	45.10
EVT-12L-6RP	12	3/8"	54.85
EVT-15L-8RP	15	1/2"	76.95
EVT-18L-8RP	18	1/2"	96.80
EVT-22L-12RP	22	3/4"	126.85
EVT-28L-16RP	28	1"	223.75

Snijring S/BSP male (form B)

RVSS	OD mm	€	
EVT-6S-4RP	6	1/4"	38.20
EVT-8S-4RP	8	1/4"	45.30
EVT-10S-6RP	10	3/8"	55.05
EVT-12S-6RP	12	3/8"	62.85
EVT-12S-8RP	12	1/2"	66.40
EVT-14S-8RP	14	1/2"	78.80
EVT-16S-8RP	16	1/2"	99.05
EVT-20S-12RP	20	3/4"	141.85
EVT-25S-16RP	25	1"	248.10

Verstelbare knie inschroefkoppeling

Tech Data
10604



Snijring L/BSP male (form B)

RVSS	OD mm	BSP	€
EVW-6L-2RP	6	1/8"	23.90
EVW-8L-4RP	8	1/4"	29.05
EVW-10L-4RP	10	1/4"	35.20
EVW-12L-6RP	12	3/8"	42.10
EVW-15L-8RP	15	1/2"	59.40
EVW-18L-8RP	18	1/2"	72.20
EVW-22L-12RP	22	3/4"	105.70
EVW-28L-16RP	28	1"	183.15

Snijring S/BSP male (form B)

RVSS	OD mm	BSP	€
EVW-8S-4RP	8	1/4"	34.00
EVW-10S-6RP	10	3/8"	41.00
EVW-12S-6RP	12	3/8"	50.40
EVW-12S-8RP	12	1/2"	54.00
EVW-14S-8RP	14	1/2"	61.85
EVW-16S-8RP	16	1/2"	73.45
EVW-16S-12RP	16	3/4"	90.25
EVW-20S-12RP	20	3/4"	116.40
EVW-25S-16RP	25	1"	201.80

Verstelbare barrel zij-tee inschroefkoppeling

Tech Data
10599



Snijring L/metrisch parallel male (form B)

RVSS	OD mm	€	
EVL-6L-10MPB	6	M10 x 1	35.70
EVL-8L-12MPB	8	M12 x 1.5	40.65
EVL-10L-14MPB	10	M14 x 1.5	45.90
EVL-12L-16MPB	12	M16 x 1.5	55.05
EVL-15L-18MPB	15	M18 x 1.5	75.15
EVL-18L-22MPB	18	M22 x 1.5	112.85
EVL-22L-26MPB	22	M26 x 1.5	125.70
EVL-28L-33MPB	28	M33 x 2	223.75

Snijring S/metrisch parallel male (form B)

RVSS	OD mm	€	
EVL-6S-12MPB	6	M12 x 1.5	40.95
EVL-8S-14MPB	8	M14 x 1.5	46.10
EVL-10S-16MPB	10	M16 x 1.5	57.15
EVL-12S-18MPB	12	M18 x 1.5	64.35
EVL-14S-20MPB	14	M20 x 1.5	74.00
EVL-16S-22MPB	16	M22 x 1.5	113.65
EVL-20S-27MPB	20	M27 x 2	141.05
EVL-25S-33MPB	25	M33 x 2	248.00

Snijringkoppelingen DIN 2353 - RVS AISI-316



Verstelbare barrel zij- tee inschroefkoppeling

Tech Data
10598



Snijring L/BSP male (form B)

RVSS	OD mm	BSPP	€
EVL-6L-2RP	6	1/8"	35.70
EVL-8L-4RP	8	1/4"	40.25
EVL-10L-4RP	10	1/4"	45.10
EVL-12L-6RP	12	3/8"	54.85
EVL-15L-8RP	15	1/2"	76.95
EVL-18L-8RP	18	1/2"	111.50
EVL-22L-12RP	22	3/4"	126.85
EVL-28L-16RP	28	1"	223.75

Snijring S/BSP male (form B)

RVSS	OD mm	BSPP	€
EVL-6S-4RP	6	1/4"	38.20
EVL-8S-4RP	8	1/4"	45.30
EVL-10S-6RP	10	3/8"	55.65
EVL-12S-6RP	12	3/8"	62.85
EVL-12S-8RP	12	1/2"	67.55
EVL-14S-8RP	14	1/2"	78.80
EVL-16S-8RP	16	1/2"	113.65
EVL-20S-12RP	20	3/4"	141.85
EVL-25S-16RP	25	1"	248.10

Standpijpkoppeling

Tech Data
10591 & 10592



Snijring L/metrisch parallel male met O-ring

RVSS	OD mm	€
EVGE-6L-10MEO	6	M10 x 1 14.50
EVGE-8L-12MEO	8	M12 x 1.5 15.80
EVGE-10L-14MEO	10	M14 x 1.5 17.40
EVGE-12L-16MEO	12	M16 x 1.5 19.85
EVGE-15L-18MEO	15	M18 x 1.5 24.70
EVGE-18L-22MEO	18	M22 x 1.5 35.15
EVGE-22L-26MEO	22	M26 x 1.5 43.10
EVGE-28L-33MEO	28	M33 x 2 64.90

Snijring S/metrisch parallel male met O-ring

RVSS	OD mm	€
EVGE-6S-12MEO	6	M12 x 1.5 15.30
EVGE-8S-14MEO	8	M14 x 1.5 16.70
EVGE-10S-16MEO	10	M16 x 1.5 19.60
EVGE-12S-18MEO	12	M18 x 1.5 21.30
EVGE-14S-20MEO	14	M20 x 1.5 29.30
EVGE-16S-22MEO	16	M22 x 1.5 35.35
EVGE-20S-27MEO	20	M27 x 2 47.30
EVGE-25S-33MEO	25	M33 x 2 79.45

Snijring L/BSP male met O-ring

RVSS	OD mm	BSPP	€
EVGE-6L-2EO	6	1/8"	14.50
EVGE-8L-4EO	8	1/4"	15.70
EVGE-10L-4EO	10	1/4"	17.65
EVGE-12L-6EO	12	3/8"	19.00
EVGE-15L-8EO	15	1/2"	26.30
EVGE-22L-12EO	22	3/4"	42.55
EVGE-28L-16EO	28	1"	64.90

Snijring S/BSP male met O-ring

RVSS	OD mm	BSPP	€
EVGE-6S-4EO	6	1/4"	15.55
EVGE-8S-4EO	8	1/4"	16.05
EVGE-10S-6EO	10	3/8"	19.15
EVGE-12S-6EO	12	3/8"	20.10
EVGE-12S-8EO	12	1/2"	24.70
EVGE-14S-8EO	14	1/2"	29.80
EVGE-16S-8EO	16	1/2"	36.50
EVGE-16S-12EO	16	3/4"	41.00
EVGE-20S-12EO	20	3/4"	47.30

Verloopkoppeling



BSP male/female (form B)

RVSS	BSPP A	BSPP B	€
RI-2RP-4RG	1/8"	1/4"	11.40
RI-2RP-6RG	1/8"	3/8"	13.50
RI-4RP-2RG	1/4"	1/8"	11.70
RI-4RP-6RG	1/4"	3/8"	15.45
RI-4RP-8RG	1/4"	1/2"	17.85
RI-4RP-12RG	1/4"	3/4"	28.30
RI-6RP-2RG	3/8"	1/8"	13.30
RI-6RP-4RG	3/8"	1/4"	14.65
RI-6RP-8RG	3/8"	1/2"	17.65
RI-6RP-12RG	3/8"	3/4"	25.75
RI-8RP-2RG	1/2"	1/8"	14.75
RI-8RP-4RG	1/2"	1/4"	14.50
RI-8RP-6RG	1/2"	3/8"	17.05
RI-8RP-12RG	1/2"	3/4"	25.90
RI-8RP-16RG	1/2"	1"	39.65
RI-12RP-4RG	3/4"	1/4"	22.15
RI-12RP-6RG	3/4"	3/8"	22.15
RI-12RP-8RG	3/4"	1/2"	28.20
RI-12RP-16RG	3/4"	1"	40.25
RI-16RP-4RG	1"	1/4"	28.90
RI-16RP-6RG	1"	3/8"	29.65
RI-16RP-8RG	1"	1/2"	32.25
RI-16RP-12RG	1"	3/4"	37.90

BSP male/female met O-ring

RVSS	BSPP A	BSPP B	€
RI-2EO-4RG	1/8"	1/4"	14.25
RI-2EO-6RG	1/8"	3/8"	16.15
RI-4EO-2RG	1/4"	1/8"	14.10
RI-4EO-6RG	1/4"	3/8"	17.95
RI-4EO-8RG	1/4"	1/2"	19.10
RI-4EO-12RG	1/4"	3/4"	32.00
RI-6EO-2RG	3/8"	1/8"	14.25
RI-6EO-4RG	3/8"	1/4"	17.10
RI-6EO-8RG	3/8"	1/2"	19.15
RI-6EO-12RG	3/8"	3/4"	26.80
RI-8EO-2RG	1/2"	1/8"	17.90
RI-8EO-4RG	1/2"	1/4"	18.40
RI-8EO-6RG	1/2"	3/8"	22.10
RI-8EO-12RG	1/2"	3/4"	27.00
RI-8EO-16RG	1/2"	1"	41.00
RI-12EO-4RG	3/4"	1/4"	27.65
RI-12EO-6RG	3/4"	3/8"	27.65
RI-12EO-8RG	3/4"	1/2"	30.55
RI-12EO-16RG	3/4"	1"	41.55
RI-16EO-4RG	1"	1/4"	31.35
RI-16EO-6RG	1"	3/8"	31.85
RI-16EO-8RG	1"	1/2"	33.90
RI-16EO-12RG	1"	3/4"	39.65

Hoofdstuk 5 – Roestvast staal

KELM™ pneumatiek
Hydrauliek
Snelkoppelingen
Afsluiters
Roestvast staal
Fittingen
Luchtconditionering
Gereedschap
Pneumatiek
Diversen
Malleabele fittingen & staal
Ringleidingssystemen
Slangen
Compressoren

Snijringkoppelingen DIN 2353 - RVS AISI-316



Laskoppeling

Tech Data
10617



Las

RVSS	OD mm	DA mm	€
ASK-108	10	8	20.75
ASK-107	10	7	20.75
ASK-106	10	6	20.75
ASK-129	12	9	21.40
ASK-128	12	8	21.40
ASK-127	12	7	21.40
ASK-1612	16	12	34.60
ASK-1611	16	11	34.60
ASK-1610	16	10	34.60
ASK-2016	20	16	47.65
ASK-2015	20	15	47.65
ASK-2014	20	14	47.65
ASK-2012	20	12	47.65
ASK-2519	25	19	76.35
ASK-2517	25	17	76.35
ASK-2515	25	15	76.35

Lasnippel

Tech Data
10615



Las - aansluiting met NBR O-ring

RVSS	OD mm	DA mm	€
SKA-108	10	8	7.60
SKA-107	10	7	7.60
SKA-106	10	6	7.60
SKA-129	12	9	8.40
SKA-128	12	8	8.40
SKA-127	12	7	8.40
SKA-1612	16	12	11.55
SKA-1611	16	11	11.55
SKA-1610	16	10	11.55
SKA-2016	20	16	14.80
SKA-2015	20	15	14.80
SKA-2014	20	14	14.80
SKA-2012	20	12	14.80
SKA-2519	25	19	21.35
SKA-2517	25	17	21.35
SKA-2515	25	15	21.35

Tech Data
10618



Las - aansluiting met NBR O-ring - verloop

RVSS	OD A mm	OD B mm	€
SKAR-10-6	10	6	10.65
SKAR-10-8	10	8	10.65
SKAR-12-8	12	8	11.10
SKAR-12-10	12	10	11.10
SKAR-16-12	16	12	13.10
SKAR-20-12	20	12	16.05
SKAR-20-16	20	16	16.05
SKAR-25-16	25	16	23.05
SKAR-25-20	25	20	23.05
SKAR-25-15	25	15	23.05

Rechte koppeling

Tech Data
10606



Snijring L - verloop

RVSS	OD A mm	OD B mm	€
GR-8L-6L	8	6	14.55
GR-10L-6L	10	6	15.65
GR-10L-8L	10	8	17.85
GR-12L-6L	12	6	17.95
GR-12L-8L	12	8	19.35
GR-12L-10L	12	10	20.65
GR-15L-10L	15	10	25.65
GR-15L-12L	15	12	26.45
GR-18L-10L	18	10	36.00
GR-18L-12L	18	12	37.60
GR-18L-15L	18	15	39.90
GR-22L-12L	22	12	49.40
GR-22L-15L	22	15	49.40
GR-22L-18L	22	18	52.65
GR-28L-18L	28	18	82.10
GR-28L-22L	28	22	84.95

Snijring S - verloop

RVSS	OD A mm	OD B mm	€
GR-8S-6S	8	6	17.85
GR-10S-6S	10	6	20.30
GR-10S-8S	10	8	22.15
GR-12S-6S	12	6	23.35
GR-12S-8S	12	8	24.25
GR-12S-10S	12	10	24.25
GR-14S-10S	14	10	26.70
GR-14S-12S	14	12	29.40
GR-16S-12S	16	12	34.90
GR-16S-14S	16	14	39.90
GR-20S-10S	20	10	46.15
GR-20S-12S	20	12	48.65
GR-20S-16S	20	16	55.05
GR-25S-16S	25	16	86.35
GR-25S-20S	25	20	91.70

KELM™
pneumatiek

Hydrauliek

Snel-
koppelingen

Afsluiters

Roestvast
staal

Fittingen

Lucht-
conditionering

Gereedschap

Pneumatiek

Diversen

Malleabele
fittingen
& staal

Ringleiding-
systemen

Slangen

Compressoren

Snijringkoppelingen DIN 2353 - RVS AISI-316



Inbusplug

Tech Data
10620



BSP male met Viton O-ring



VSTI-2EO	1/8"	7.65
VSTI-4EO	1/4"	8.60
VSTI-6EO	3/8"	10.00
VSTI-8EO	1/2"	13.25
VSTI-12EO	3/4"	18.15
VSTI-16EO	1"	28.40

Metrisch male met Viton O-ring



VSTI-10M	M10 x 1	8.50
VSTI-12M	M12 x 1.5	9.00
VSTI-14M	M14 x 1.5	9.70
VSTI-16M	M16 x 1.5	10.45
VSTI-18M	M18 x 1.5	11.10
VSTI-20M	M20 x 1.5	13.00
VSTI-22M	M22 x 1.5	14.45
VSTI-26M	M26 x 1.5	19.20
VSTI-27M	M27 x 2	20.65
VSTI-33M	M33 x 2	31.05

Metrisch male met O-ring - ISO 6149/
DIN 3582-T3



VSTI-27M-OR	M27 x 2	20.65
-------------	---------	-------

Steunhuls



Voor dunwandige stalen leiding
en slangen



63260400	4	17	2.55
63260600	6	14	2.70
63260800	8	15,5	3.00
63260900	9	17	3.35
63261000	10	15,5	3.85
63261200	12	17	3.65
63261300	13	17	5.80
63261500	15	18	4.70
63261800	18	20	6.40

Eindkap

Tech Data
10622



Snijring L



ROV-6L	6	8.05
ROV-8L	8	9.00
ROV-10L	10	11.25
ROV-12L	12	13.80
ROV-15L	15	19.60
ROV-18L	18	26.65
ROV-22L	22	36.90

Snijring S



ROV-6S	6	9.55
ROV-8S	8	11.25
ROV-10S	10	14.50
ROV-12S	12	16.80
ROV-14S	14	20.75
ROV-16S	16	26.95
ROV-20S	20	41.15
ROV-25S	25	69.85

Afsluitstop

Tech Data
10621



Aansluiting
L met NBR O-ring



VKA-6L	6	5.30
VKA-8L	8	5.60
VKA-10L	10	6.45
VKA-12L	12	7.65
VKA-15L	15	8.55
VKA-18L	18	11.05
VKA-22L	22	15.15
VKA-28L	28	22.15

Aansluiting S met NBR O-ring



VKA-6S	6	5.30
VKA-8S	8	5.60
VKA-10S	10	6.45
VKA-12S	12	7.65
VKA-14S	14	8.65
VKA-16S	16	10.80
VKA-20S	20	14.45
VKA-25S	25	19.00

Wartelmoer

Tech Data
10623



Snijring L



M-6L-FT	6	1.85
M-8L-FT	8	2.25
M-10L-FT	10	2.50
M-12L-FT	12	2.90
M-15L-FT	15	3.95
M-18L-FT	18	7.50
M-22L-FT	22	9.05
M-28L-FT	28	13.00

Snijring S



M-6S-FT	6	2.35
M-8S-FT	8	2.65
M-10S-FT	10	3.10
M-12S-FT	12	3.55
M-14S-FT	14	4.45
M-16S-FT	16	7.25
M-20S-FT	20	9.55
M-25S-FT	25	16.95

Snijring

Tech Data
10624



Snijring L



DPR-6L	6	1.15
DPR-8L	8	1.30
DPR-10L	10	2.10
DPR-12L	12	2.30
DPR-15L	15	2.80
DPR-18L	18	3.15
DPR-22L	22	3.55
DPR-28L	28	5.45

Snijring S



DPR-6S	6	1.15
DPR-8S	8	1.35
DPR-10S	10	2.05
DPR-12S	12	2.35
DPR-16S	16	2.80
DPR-20S	20	3.35
DPR-25S	25	5.30

KELM™
pneumatiek

Hydrauliek

Snel-
koppelingen

Afsluiters

Roestvast
staal

Fittingen

Lucht-
conditionering

gereedschap

Pneumatiek

Diversen

Malleabele
fittingen
& staal

Ringleiding-
systemen

Slangen

Compressoren

Adapters - RVS AISI-316

Tech Data 20884

Adapters male/male



BSP male

0044			€
2025-1401	1/8"	1/8"	5.10
2025-1419	1/4"	1/8"	9.70
2025-1427	1/4"	1/4"	9.70
2025-1435	3/8"	1/8"	12.90
2025-1443	3/8"	1/4"	12.90
2025-1450	3/8"	3/8"	12.90
2025-1468	1/2"	1/4"	15.55
2025-1476	1/2"	3/8"	15.55
2025-1484	1/2"	1/2"	16.20
2025-1495	5/8"	1/2"	26.95
2025-1505	5/8"	5/8"	26.95
2025-1520	3/4"	1/4"	27.15
2025-1526	3/4"	3/8"	27.15
2025-1534	3/4"	1/2"	28.35
2025-1538	3/4"	5/8"	29.60
2025-1559	3/4"	3/4"	29.70
2025-1567	1"	1/2"	31.05
2025-1572	1"	5/8"	31.55
2025-1583	1"	3/4"	31.60
2025-1591	1"	1"	34.25
2025-1595	1.1/4"	3/4"	61.35
2025-1600	1.1/4"	1"	61.35
2025-1609	1.1/4"	1.1/4"	61.40
2025-1611	1.1/2"	1"	115.90
2025-1615	1.1/2"	1.1/4"	115.90
2025-1617	1.1/2"	1.1/2"	116.40
2025-1620	2"	1.1/2"	200.35
2025-1625	2"	2"	200.45



BSP male/BSPT male

0044		€
2033-9693	1/4"	9.70
2033-9761	3/8"	12.90
2033-9719	1/2"	16.20
2033-9727	3/4"	29.70
2033-9735	1"	34.25



BSP male/NPT male

0044		€
2025-1633	1/8"	5.10
2025-1641	1/4"	9.70
2025-1658	3/8"	12.90
2025-1674	1/2"	16.20
2025-1682	3/4"	29.70
2025-1690	1"	34.25
2025-1700	1.1/4"	131.65
2025-1710	1.1/2"	174.80
2025-1720	2"	321.10



BSPT male

0044			€
2025-1708	1/8"	1/8"	3.85
2025-1715	1/4"	1/8"	7.45
2025-1724	1/4"	1/4"	5.10
2025-1727	3/8"	1/8"	11.55
2025-1732	3/8"	1/4"	7.75
2025-1740	3/8"	3/8"	7.75
2025-1845	1/2"	1/8"	20.30
2025-1852	1/2"	1/4"	20.30
2025-1856	1/2"	3/8"	12.90
2025-1865	1/2"	1/2"	20.60
2025-1881	3/4"	1/8"	33.30
2025-1885	3/4"	1/4"	35.10
2025-1889	3/4"	3/8"	45.85
2025-1894	3/4"	1/2"	46.10
2025-1898	3/4"	3/4"	46.25
2025-1905	1"	1/8"	57.00
2025-1910	1"	1/4"	57.00
2025-1915	1"	3/8"	58.00
2025-1920	1"	1/2"	58.50
2025-1925	1"	3/4"	59.15
2025-1931	1"	1"	59.85
2025-1935	1.1/4"	1"	111.95
2025-1940	1.1/4"	1.1/4"	147.35
2025-1945	2"	1"	190.50
2025-1950	1.1/2"	1.1/2"	196.20
2025-1956	2"	1"	308.40
2025-1960	2"	1.1/2"	324.10
2025-1965	2"	2"	463.50

Hoofdstuk 5 - Roestvast staal

KELM™
pneumatiek

Hydrauliek

Snel-
koppelingen

Afsluiters

Roestvast
staal

Fittingen

Lucht-
conditionering

Gereedschap

Pneumatiek

Diversen

Malleabele
fittingen
& staal

Ringleiding-
systemen

Slangen

Compressoren

Voor

Jetwash hogedrukslang



...zie pagina 544

Adapters - RVS AISI-316

Tech Data 20884

Adapters male/female



BSP male/BSP swivel female

0044	Male	Female	€
2025-1930	1/8"	1/8"	20.70
2025-1948	1/4"	1/4"	19.40
2025-1955	1/4"	3/8"	19.40
2025-1961	1/4"	1/2"	29.25
2025-1963	3/8"	1/4"	19.40
2025-1971	3/8"	3/8"	23.20
2025-1989	3/8"	1/2"	28.35
2025-1997	1/2"	3/8"	28.35
2025-2003	1/2"	1/2"	28.35
2025-2020	1/2"	3/4"	45.20
2025-2029	3/4"	1/2"	36.85
2025-2037	3/4"	3/4"	45.20
2025-2043	3/4"	1"	55.60
2025-2060	1"	1"	55.60

BSPT male/BSP swivel female

0044		€
2033-9862	1/8"	21.60
2033-9867	1/4"	27.15
2033-9875	3/8"	34.85
2033-9883	1/2"	53.05
2033-9891	3/4"	75.60
2033-9896	1"	93.80

Adapters female/female



BSP swivel female

0044		€
2025-2078	1/4"	19.40
2025-2082	3/8"	37.30
2025-2086	3/8"	23.20
2025-2089	1/2"	28.35
2025-2093	1/2"	28.35
2025-2094	1/2"	28.35
2025-2100	5/8"	50.45
2025-2122	3/4"	53.10
2025-2132	3/4"	53.10
2025-2110	1"	55.60



BSP male/BSP female

0044	Male	Female	€
2025-8121	1/8"	1/8"	9.80
2025-8131	1/4"	1/8"	13.30
2025-8142	1/4"	1/4"	19.15
2025-8151	3/8"	1/8"	22.40
2025-8161	3/8"	1/4"	22.55
2025-8171	3/8"	3/8"	23.70
2025-8181	1/2"	1/4"	29.45
2025-8191	3/4"	1/4"	29.45
2025-8201	1/2"	3/8"	29.45
2025-8211	1/2"	1/2"	30.70
2025-8221	3/4"	3/8"	57.00
2025-8231	3/4"	1/2"	57.35
2025-8241	3/4"	3/4"	66.55
2025-8251	1"	1/2"	101.95
2025-8261	1"	1"	111.95
2025-8271	1"	3/4"	104.10
2025-8281	1.1/4"	1/2"	81.75
2025-8291	1.1/4"	3/4"	158.45
2025-8301	1.1/4"	1"	164.40
2025-8311	1.1/4"	1.1/4"	191.40
2025-8321	1.1/2"	3/4"	195.65
2025-8331	1.1/2"	1"	202.50
2025-8341	1.1/2"	1.1/2"	273.95
2025-8351	1.1/2"	1.1/4"	206.00
2025-8361	2"	2"	432.15



BSP female - sok zeskant

0044		€
2025-2466	1/8"	5.10
2025-2474	1/4"	9.70
2025-2482	3/8"	12.90
2025-2490	1/2"	15.55
2025-2508	3/4"	28.35
2025-2516	1"	33.70

Knie adapters



BSP male

0044		€
2033-9922	1/8"	22.75
2033-9933	1/4"	27.15
2033-9941	3/8"	36.20
2033-9958	1/2"	38.75
2033-9962	5/8"	71.75
2033-9963	3/4"	72.65
2033-9974	1"	76.60
2033-9982	1.1/4"	267.05
2033-9992	1.1/2"	282.90



BSP male/BSP swivel female

0044		€
2025-2185	1/8"	22.60
2025-2193	1/4"	25.85
2025-2201	3/8"	33.70
2025-2219	1/2"	51.70
2025-2223	5/8"	70.50
2025-2227	3/4"	74.40
2025-2232	1"	190.50
2025-2240	1.1/4"	384.95
2025-2245	1.1/2"	451.75



BSP swivel female

0044		€
2025-2128	1/8"	31.80
2025-2136	1/4"	37.65
2025-2151	1/2"	96.25
2025-2169	3/4"	182.80

KELM™
pneumatiek

Hydrauliek

Snel-
koppelingen

Atsluiters

Roestvast
staal

Fittingen

Lucht-
conditionering

Gereedschap

Pneumatiek

Diversen

Malleabele
fittingen
& staal

Ringleiding-
systemen

Slangen

Compressoren

Adapters - RVS AISI-316

Tech Data **20884**

Tee adapters



BSP male

0044		€
2025-2321	1/8"	21.60
2025-2326	1/4"	22.60
2025-2334	3/8"	29.70
2025-2342	1/2"	48.55
2025-2449	3/4"	161.75
2025-2354	1"	308.40



BSP male/BSP swivel female - zij-tee

0044		€
2025-4501	1/8"	45.70
2025-4511	1/4"	47.75
2025-4521	3/8"	59.25
2025-4531	1/2"	88.35
2025-4541	3/4"	172.10
2025-4551	1"	206.70



BSP swivel female

0044		€
2025-2250	1/4"	27.15
2025-2258	3/8"	57.35
2025-2263	1/2"	71.25
2025-2273	5/8"	104.35
2025-2283	3/4"	206.80
2025-2293	1"	249.25

Schotadapters



BSP male - met moer

0044		€
2025-2391	1/4"	16.80
2025-2409	3/8"	20.70
2025-2417	1/2"	25.85
2025-2425	5/8"	39.20
2025-2433	3/4"	41.35
2025-2441	1"	59.55
2025-2445	1.1/4"	216.10
2025-2450	1.1/2"	294.65

Pluggen



BSP male

0044		€
2033-4002	1/8"	7.65
2033-4012	1/4"	9.40
2033-4022	3/8"	11.60
2033-4032	1/2"	16.70
2033-4042	5/8"	20.70
2033-4052	3/4"	25.95
2033-4062	1"	48.35
2033-4072	1.1/4"	92.30
2033-4082	1.1/2"	123.20
2033-4092	2"	225.30



BSPT male

0044		€
2025-2524	1/8"	2.30
2025-2532	1/4"	3.35
2025-2540	3/8"	4.60
2025-2557	1/2"	7.75
2025-2565	3/4"	12.90
2025-2573	1"	20.70
2025-2582	1.1/4"	39.10
2025-2592	1.1/2"	72.65
2025-2602	2"	151.30

Kappen



BSP female

0044		€
2033-8301	1/8"	4.95
2033-8311	1/4"	7.50
2033-8321	3/8"	9.25
2033-8331	1/2"	11.75
2033-8341	3/4"	19.25
2033-8351	1"	35.00

KELM™
pneumatiek

Hydrauliek

Snel-
koppelingen

Afsluiters

Roestvast
staal

Fittingen

Lucht-
conditionering

Gereedschap

Pneumatiek

Diversen

Malleabele
fittingen
& staal

Ringleiding-
systemen

Slangen

Compressoren

Tech Data 10708



Industriële topkwaliteit

Materiaal: RVS AISI-316
Normering: BSPT schroefdraad, ISO 7.1, BS-21 (British Standard) en DIN2999
 BSP Parallel schroefdraad, ISO 228, klasse A

Veiligheidsfactor: 4

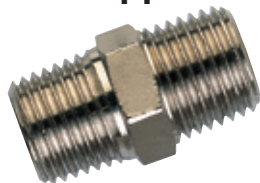


Temperatuur:
225°C



Maximale werkdruk:
140 bar (bij 20°C)

Dubbele nippel



BSPT male

RVSD	BSPT	Ø	L mm	€
60001010	1/8"	11	19.5	11.35
60001313	1/4"	14	27	13.70
60001717	3/8"	17	28	15.25
60002121	1/2"	22	33.5	18.10
60002727	3/4"	27	40	20.80

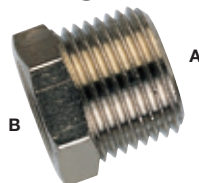
Verlooppnippel



BSPT male

RVSD	BSPT A	BSPT B	Ø	L mm	€
60021013	1/8"	1/4"	14	23.5	14.35
60021017	1/8"	3/8"	17	24	15.55
60021317	1/4"	3/8"	17	27.5	15.55
60021321	1/4"	1/2"	22	30.5	18.00
60021721	3/8"	1/2"	22	31	18.10
60022127	1/2"	3/4"	27	37.5	24.25

Verlooping



BSPT male/BSP female

RVSD	BSPT A	BSP B	Ø	L mm	€
60041310	1/4"	1/8"	14	16	14.50
60041710	3/8"	1/8"	17	16.5	15.65
60041713	3/8"	1/4"	17	16.5	16.30
60042113	1/2"	1/4"	22	19.5	14.75
60042117	1/2"	3/8"	22	19.5	20.25
60042721	3/4"	1/2"	27	23.5	24.45

Sok



BSP female

RVSD	BSP	Ø	L mm	€
60061010	1/8"	14	15	7.10
60061313	1/4"	17	22	9.95
60061717	3/8"	22	24	14.20
60062121	1/2"	27	30	22.75
60062727	3/4"	32	32	34.00

Verloopsok



BSP female

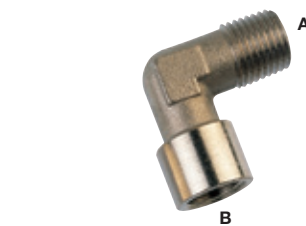
RVSD	BSP A	BSP B	Ø	L mm	€
60071013	1/8"	1/4"	17	19	9.35
60071317	1/4"	3/8"	22	23	13.70
60071721	3/8"	1/2"	24	27.5	17.15
60072127	1/2"	3/4"	30	30	29.10

Knief



BSP female

RVSD	BSP	Ø	L mm	€
60091010	1/8"	11	21	27.80
60091313	1/4"	12	25.5	37.65
60091717	3/8"	15	28	47.15
60092121	1/2"	20	32	58.00



BSPT male/BSP female

RVSD	BSPT A	BSP B	Ø	L mm	€
60101010	1/8"	1/8"	11	18	27.80
60101313	1/4"	1/4"	12	24	37.65
60101717	3/8"	3/8"	15	27	47.15
60102121	1/2"	1/2"	20	29.5	58.00

KELM™
pneumatiek

Hydrauliek

Snel-
koppelingen

Atsluiters

Roestvast
staal

Fittingen

Lucht-
conditionering

Gereedschap

Pneumatiek

Diversen

Malleabele
fittingen &
staal

Ringleiding-
systemen

Slangen

Compressoren

Neusstuk



BSPT male/BSP female

RVSD	BSPT A	BSP B	Ø	L mm	€
60081013	1/8"	1/4"	17	22	15.95
60081317	1/4"	3/8"	22	27	19.35
60081321	1/4"	1/2"	24	30	24.05
60081721	3/8"	1/2"	24	30.5	24.45
60082127	1/2"	3/4"	32	35	31.30

Plug



Zeskant - BSP male

RVSD	BSP	Ø	L mm	€
60181000	1/8"	14	10	13.30
60181300	1/4"	17	13	14.75
60181700	3/8"	19	13.5	16.10
60182100	1/2"	24	14.5	20.15
60182700	3/4"	30	16	24.95



Inbus - BSPT male

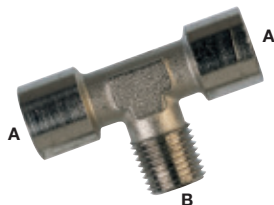
RVSD	BSPT	Ø	L mm	€
60371000	1/8"	5	7.5	11.35
60371300	1/4"	6	10	12.40
60371700	3/8"	8	11	13.60
60372100	1/2"	10	13	17.40

Tee



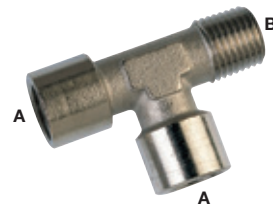
BSP female

RVSD	BSP	Ø	L mm	€
60121010	1/8"	12	37	34.10
60121313	1/4"	12	49	48.05
60121717	3/8"	15	54	62.25
60122121	1/2"	20	64	76.55



BSPT male/BSP female

RVSD	BSP A	BSPT B	Ø	L mm	€
60131010	1/8"	1/8"	12	37	34.10
60131313	1/4"	1/4"	12	49	48.05
60131717	3/8"	3/8"	15	54	62.25
60132121	1/2"	1/2"	20	64	76.55



Zij-tee - BSPT male/BSP female

RVSD	BSP A	BSPT B	Ø	L mm	€
60141010	1/8"	1/8"	12	36	34.10
60141313	1/4"	1/4"	12	47.5	48.05
60141717	3/8"	3/8"	15	52.5	62.25
60142121	1/2"	1/2"	20	61.5	76.55

Voor

RVS kogelafsluiters



...zie pagina 372

Opsteekkoppelingen - RVS AISI-316L



Geschikt voor gebruik met PA, PE, PU, PTFE en FEP slangen.

Materiaal: volledig RVS AISI-316L

Seal: Food FKM

Medium: Perslucht, vacuüm, water



Temperatuur:
-15°C tot +225°C



Maximale werkdruk:
-0.99 tot 15 bar



De opsteekkoppelingen zijn voorzien van zeskant voor eenvoudige montage. Koppelingen met BSPT male kort schroefdraad zijn ook geschikt voor gebruik met BSP of NPT schroefdraad.

Rechte inschroefkoppeling



Opsteek/BSPT male (kort) met FKM seal

6705	OD mm		€
61005-6-1/8	6/4	1/8"	12.75
61005-6-1/4	6/4	1/4"	14.65
61005-8-1/8	8/6	1/8"	13.05
61005-8-1/4	8/6	1/4"	14.85
61005-10-1/4	10/8	1/4"	15.85
61005-10-3/8	10/8	3/8"	16.90

Rechte koppeling



Opsteek

6705	OD mm	€
61040-6	6/4	21.45
61040-8	8/6	22.15
61040-10	10/8	24.95

Schotkoppeling



Opsteek

6705	OD mm	€
61050-6	6/4	30.80
61050-8	8/6	33.70

Knie inschroefkoppeling



Opsteek/BSPT male

6705	OD mm		€
61100-6-1/8	6/4	1/8"	25.20
61100-6-1/4	6/4	1/4"	25.60
61100-8-1/8	8/6	1/8"	26.10
61100-8-1/4	8/6	1/4"	26.40
61100-10-1/4	10/8	1/4"	29.75
61100-10-3/8	10/8	3/8"	30.10

Kniekoppeling



Opsteek

6705	OD mm	€
61130-6	6/4	31.50
61130-8	8/6	32.50
61130-10	10/8	37.20

Tee inschroefkoppeling



Opsteek/BSPT male

6705	OD mm		€
61200-6-1/8	6/4	1/8"	41.25
61200-6-1/4	6/4	1/4"	41.75
61200-8-1/8	8/6	1/8"	43.15
61200-8-1/4	8/6	1/4"	44.15
61200-10-1/4	10/8	1/4"	46.75
61200-10-3/8	10/8	3/8"	47.10

Tee koppeling



Opsteek

6705	OD mm	€
61230-6/4	6/4	47.25
61230-8/6	8/6	49.50
61230-10/8	10/8	54.85

Wartelmoer



Voor opsteekkoppeling

6705	OD mm		€
61700-6-M10	6/4	M10X1	6.00
61700-8-M12	8/6	M12X1	6.30
61700-10-M14	10/8	M14X1	7.30

Hoofdstuk 5 – Roestvast staal

KELM™
pneumatiek

Hydrauliek

Snel-
koppelingen

Atsluiters

Roestvast
staal

Fittingen

Lucht-
conditionering

Gereedschap

Pneumatiek

Diversen

Malleabele
fittingen
& staal

Ringleiding-
systemen

Slangen

Compressoren

Push-in koppelingen - RVS AISI-316L



Revolutionair ontwerp voor veeleisende toepassingen

Normering: BSPT: ISO 7.1, BS21 en DIN2999. BSP: ISO 228A. METRISCH: ISO R/262

Toepassingen: multifunctioneel: veel gebruikt in de voedingmiddelenindustrie, farmaceutische industrie, chemische industrie, medische toepassingen etc.

Media: perslucht, vacuüm, vloeistoffen, gassen.

Materiaal: huis, ontkoppeling en tandring: RVS AISI-316L
veiligheidsring: PTFE
lip-seal en O-ring (bij BSP draad): viton

Temperatuur:
-15°C tot 225°C

Maximale werkdruk:
-0,99 tot 15



Tech Data
1378

Hoofdstuk 5 – Roestvast staal

Rechte inschroefkoppeling



Push-in/BSPT male

RVSI	OD mm	BSPT	L mm	€
64000410	4	1/8"	10	14.55
64000413	4	1/4"	14	16.10
64000610	6	1/8"	13	17.25
64000613	6	1/4"	14	18.00
64000810	8	1/8"	14	19.10
64010813BSPT	8	1/4"	14	19.45
64001013	10	1/4"	17	25.30
64001017	10	3/8"	17	27.95
64001217	12	3/8"	21	33.50
64001221	12	1/2"	22	34.45



Push-in/BSP male met O-ring

RVSI	OD mm	BSPT	L mm	€
64010405	4	M5	10	20.00
64010410	4	1/8"	10	19.50
64010413	4	1/4"	15	19.85
64010610	6	1/8"	13	19.60
64010613	6	1/4"	15	23.50
64010810	8	1/8"	14	21.80
64010813BSP	8	1/4"	15	24.65
64011013	10	1/4"	17	30
64011017	10	3/8"	17	32.75
64011217	12	3/8"	21	41.20
64011221	12	1/2"	22	45.75

Rechte koppeling



Push-in

RVSI	OD mm	L mm	€
64110400	4	31	21.65
64110600	6	35	21.80
64110800	8	36,5	25.10
64111000	10	42	33.90
64111200	12	48	50.40

Schotkoppeling



Push-in

RVSI	OD mm	L mm	€
64090412	4	M12 x 1	17 31 35.75
64090614	6	M14 x 1	17 35 38.60
64090816	8	M16 x 1	19 37 46.25
64091020	10	M20 x 1	24 42 58.70
64092122	12	M22 x 1	26 48 72.40

Knie inschroefkoppeling



Push-in/BSPT male - draaibaar

RVSI	OD mm	BSPT	€
64430410	4	1/8"	36.85
64430413	4	1/4"	40.20
64430610	6	1/8"	37.00
64430613	6	1/4"	42.70
64430810	8	1/8"	43.55
64430813	8	1/4"	44.25
64431013	10	1/4"	58.45
64431017	10	3/8"	59.75
64431021	10	1/2"	61.90
64431217	12	3/8"	76.45
64431221	12	1/2"	78.65



Push-in/BSP male met O-ring - draaibaar

RVSI	OD mm	BSPT	€
64050405	4	M5	36.20
64050410	4	1/8"	37.20
64050413	4	1/4"	40.30
64050610	6	1/8"	40.20
64050613	6	1/4"	42.70
64050810	8	1/8"	44.10
64050813	8	1/4"	44.35
64051013	10	1/4"	56.60
64051017	10	3/8"	64.75
64051021	10	1/2"	81.00
64051217	12	3/8"	78.00
64051221	12	1/2"	99.30

Kniekoppeling



Push-in

RVSI	OD mm	€
64020400	4	28.00
64020600	6	29.90
64020800	8	34.60
64021000	10	47.35
64021200	12	65.85

Tee koppeling



Push-in

RVSI	OD mm	L mm	€
64030400	4	36	39.25
64030600	6	42	41.40
64030800	8	45	47.65
64031000	10	52	64.40
64031200	12	61	79.90

Tee inschroefkoppeling



Push-in/BSPT male - draaibaar

RVSI	OD mm	BSPT	L mm	€
64440410	4	1/8"	11	38.70
64440413	4	1/4"	14	36
64440610	6	1/8"	11	49.20
64440613	6	1/4"	14	52.25
64440810	8	1/8"	11	45
64440813	8	1/4"	14	55.30
64441013	10	1/4"	14	75.40
64441017	10	3/8"	17	76.65
64441021	10	1/2"	22	78.85
64441217	12	3/8"	18	98.70
64441221	12	1/2"	22	100.75

Push-in/BSP male met O-ring - draaibaar

RVSI	OD mm	BSPT	L mm	€
64060405	4	M5	8	44.15
64060410	4	1/8"	13	45.90
64060413	4	1/4"	15	49.20
64060610	6	1/8"	13	42
64060613	6	1/4"	15	52.30
64060810	8	1/8"	13	55.15
64060813	8	1/4"	15	55.45
64061013	10	1/4"	15	75.70
64061017	10	3/8"	21	87.45
64061021	10	1/2"	22	98.00
64061217	12	3/8"	21	109.80
64061221	12	1/2"	22	121.35

Push-in koppelingen - RVS AISI-316

Tech Data 10257

Temperatuur:
-20°C tot +200°C

Maximale werkdruk:
-0.8 tot 10 bar
(afhankelijk van toegepaste leiding)

Materiaal:
Huis: RVS AISI-316
O-ring: FKM
Medium: Perslucht, stoom & water i.c.m.
gekalibreerde PU, PA en PTFE leiding

Alle afdichtingen zijn
FDA gecertificeerd



Rechte inschroefkoppeling



Push-in/BSPT male

	0386	OD mm		€
SSPC4-01	4	1/8"		13.80
SSPC6-01	6	1/8"		14.20
SSPC6-02	6	1/4"		14.65
SSPC8-01	8	1/8"		14.65
SSPC8-02	8	1/4"		15.20
SSPC10-02	10	1/4"		16.60
SSPC10-03	10	3/8"		17.10
SSPC12-04	12	1/2"		19.55



Push-in/BSP male

	0386	OD mm		€
SSPC4-G01	4	1/8"		14.40
SSPC6-G01	6	1/8"		14.60
SSPC6-G02	6	1/4"		15.10
SSPC8-G01	8	1/8"		15.10
SSPC8-G02	8	1/4"		15.60
SSPC10-G02	10	1/4"		17.10
SSPC10-G03	10	3/8"		17.55
SSPC12-G04	12	1/2"		20.20

Rechte opschroefkoppeling



Push-in/BSP female

	0386	OD mm		€
SSPCF4-G01	4	1/8"		15.20
SSPCF6-G01	6	1/8"		15.65
SSPCF6-G02	6	1/4"		17.55
SSPCF8-G01	8	1/8"		15.65
SSPCF8-G02	8	1/4"		17.55
SSPCF10-G02	10	1/4"		17.55
SSPCF10-G03	10	3/8"		19.05
SSPCF12-G03	12	3/8"		19.55
SSPCF12-G04	12	1/2"		22.50

Knie inschroefkoppeling



Push-in/
BSPT male - draaibaar

	0386	OD mm		€
SSPL4-01	4	1/8"		22.70
SSPL6-01	6	1/8"		24.00
SSPL6-02	6	1/4"		24.00
SSPL8-01	8	1/8"		25.90
SSPL8-02	8	1/4"		26.40
SSPL10-02	10	1/4"		29.80
SSPL10-03	10	3/8"		30.35
SSPL12-04	12	1/2"		36.65



Push-in/BSP
male - draaibaar

	0386	OD mm		€
SSPL4-G01	4	1/8"		23.90
SSPL6-G01	6	1/8"		24.70
SSPL6-G02	6	1/4"		24.70
SSPL8-G01	8	1/8"		26.65
SSPL8-G02	8	1/4"		27.20
SSPL10-G02	10	1/4"		30.75
SSPL10-G03	10	3/8"		31.25
SSPL12-G04	12	1/2"		37.75

Knie opschroefkoppeling



Push-in/
BSP female

	0386	OD mm		€
SSPLF4-G01	4	1/8"		23.70
SSPLF6-G01	6	1/8"		24.95
SSPLF6-G02	6	1/4"		24.95
SSPLF8-G01	8	1/8"		27.40
SSPLF8-G02	8	1/4"		27.40
SSPLF10-G02	10	1/4"		30.80
SSPLF10-G03	10	3/8"		31.75
SSPLF12-G03	12	3/8"		41.30
SSPLF12-G04	12	1/2"		38.60

Tee inschroefkoppeling



Push-in/BSP male

	0386	OD mm		€
SSPB4-G01	4	1/8"		33.80
SSPB6-G01	6	1/8"		34.20
SSPB6-G02	6	1/4"		34.75
SSPB8-G01	8	1/8"		38.70
SSPB8-G02	8	1/4"		39.25
SSPB10-G02	10	1/4"		46.40
SSPB10-G03	10	3/8"		46.85
SSPB12-G03	12	3/8"		55.40
SSPB12-G04	12	1/2"		56.45

Flowregelaar



Push-in/BSP male - eenrichting -
uitwendige regelknop

	0386	OD mm		€
SSNSE4-G01	4	1/8"		120.50
SSNSE6-G01	6	1/8"		121.95
SSNSE6-G02	6	1/4"		134.55
SSNSE8-G01	8	1/8"		126.00
SSNSE8-G02	8	1/4"		136.05
SSNSE8-G03	8	3/8"		151.15
SSNSE10-G02	10	1/4"		138.65
SSNSE10-G03	10	3/8"		151.15
SSNSE10-G04	10	1/2"		161.30
SSNSE12-G04	12	1/2"		171.35

KELM™
pneumatiek

Hydrauliek

Snel-
koppelingen

Atsluiters

Roestvast
staal

Fittingen

Lucht-
conditionering

Gereedschap

Pneumatiek

Diversen

Malleabele
fittingen
& staal

Ringleiding-
systemen

Slangen

Compressoren


Push-in koppelingen - RVS AISI-316

Tech Data 10257

Temperatuur:
-20°C tot +200°C

Maximale werkdruk:
-0.8 tot 10 bar
(afhankelijk van toegepaste leiding)

Materiaal:
Huis: RVS AISI-316
O-ring: FKM
Medium: Perslucht, stoom & water i.c.m. gekalibreerde PU, PA en PTFE leiding

 Alle afdichtingen zijn FDA gecertificeerd



Rechte koppeling



Push-in

0386	OD mm	€
SSPUC-4	4	17.95
SSPUC-6	6	19.05
SSPUC-8	8	22.00
SSPUC-10	10	24.45
SSPUC-12	12	29.35

Tee koppeling



Push-in

0386	OD mm	€
SSPUT-4	4	32.25
SSPUT-6	6	33.75
SSPUT-8	8	38.10
SSPUT-10	10	45.00
SSPUT-12	12	53.75

Steelekoppeling



Steel/Push-in - verloop

0386	OD mm	OD mm	€
SSPGJ6-4	6	4	14.20
SSPGJ8-4	8	4	14.20
SSPGJ8-6	8	6	14.20
SSPGJ10-6	10	6	16.60
SSPGJ10-8	10	8	16.60
SSPGJ12-8	12	8	16.60
SSPGJ12-10	12	10	18.05



Push-in - verloop

0386	OD mm	OD mm	€
SSPG6-4	6	4	20.05
SSPG8-4	8	4	23.45
SSPG8-6	8	6	23.45
SSPG10-6	10	6	25.90
SSPG10-8	10	8	25.90
SSPG12-8	12	8	30.80
SSPG12-10	12	10	30.80

Schotkoppeling



Push-in

0386	OD mm	€
SSPM-4	4	27.50
SSPM-6	6	30.35
SSPM-8	8	34.75
SSPM-10	10	36.20
SSPM-12	12	39.65

Plug



Push-in

0386	OD mm	€
SSPP-4	4	5.55
SSPP-6	6	5.70
SSPP-8	8	6.10
SSPP-10	10	7.10
SSPP-12	12	8.05

Kniekoppeling



Push-in

0386	OD mm	€
SSPUL-4	4	23.20
SSPUL-6	6	24.95
SSPUL-8	8	26.40
SSPUL-10	10	29.80
SSPUL-12	12	35.20

Y-koppeling



Push-in

0386	OD mm	€
SSPY-4	4	36.95
SSPY-6	6	38.60
SSPY-8	8	43.00
SSPY-10	10	49.90
SSPY-12	12	58.70



MENS, MAATWERK & TECHNIEK

Professionals in Flow & Fluid Technology

Gewoon

www.aimfluid.nl



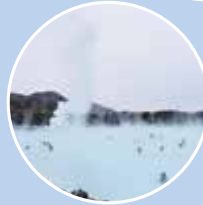
Neutrale medium



Agressieve medium



Heet water



Stoom



Pneumatiek

| AIM FLUID CONTROL |

Het meten en regelen van Flow & Fluid Technology is onze 2^e natuur



aim *fluid control* sinds 1995. Als onafhankelijke specialist in het meten en regelen van diverse soorten vloeistof- en gasstromen (Flow & Fluid Technology) richt aim zich op de professionele markt. De markt met de behoefte aan standaardproducten tot aan engineeringprojecten die verregaande technische kennis vereisen op het gebied van afsluiters, magneetventielen, pneumatiek ventielen, actuators, appendages, vacuümpompen, compressoren, fittingen en toebehoren.

Vanuit het hoofdkantoor en magazijn te Son & Breugel, nabij Science Park Ekkersrijt, ontzorgt aim zijn klanten van A tot Z en biedt technische en logistieke maatwerkoplossingen middels gedegen kennis, een gedreven en persoonlijke service én een klantspecifiek voorraadbeheer.

Ontzorgend, **Betrokken** & **Verantwoordelijk**

aim fluid control b.v.
Ekkersrijt 7310-7312
5692 HH Son en Breugel / Nederland
T. +31(0) 499 49 10 90
E. info@aimfluid.nl
F. +31(0) 499 49 63 70
I. www.aimfluid.nl

