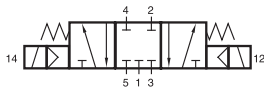
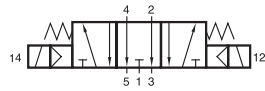


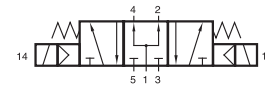
# MD 53\_303/MD 53\_343 MD 53\_403/MD 53\_463



MD 531 303  
MD 531 343  
MD 531 403  
MD 531 463



MD 532 303  
MD 532 343  
MD 532 403  
MD 532 463



MD 533 303  
MD 533 343  
MD 533 403  
MD 533 463



5/3-way solenoid valve with spring return to middle position, actuated by permanent signal. Ports 2 and 4 are in the valve, ports 1, 3 and 5 in the manifold plate.

- Type 531 centre closed
- Type 532 centre exhausted
- Type 533 centre pressurised

When ordering please complete the type number by 1, 2 or 3 according to the type required.

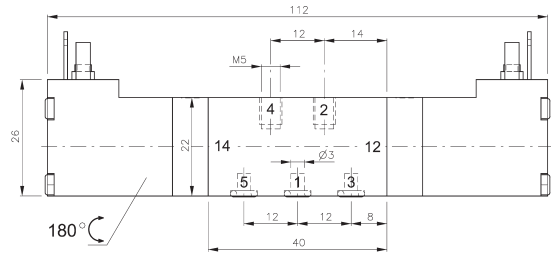
Available with solenoid operators:  
230V/50Hz, 110V/50Hz, 24V/50Hz, 24V=,  
12V=, 6V= either for connector form C ISO 15217  
or with flying leads, standard cable length 500 mm.  
For details about solenoid system, please refer to  
page 2.13.1.

Valves are generally equipped with manual override  
to push.

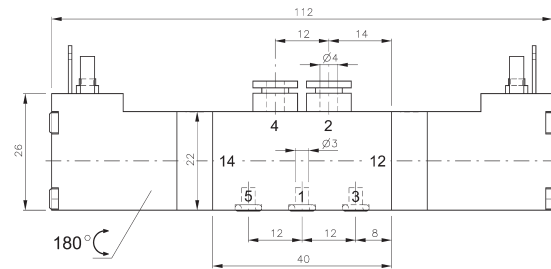
Manifolds are described on page 2.7.2.1.

Blanking plates are also available type BP 5 303  
or BP 5 403.

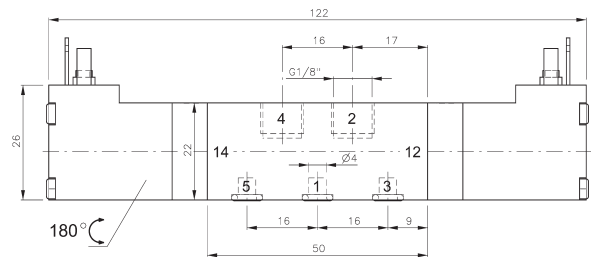
Mounting screws and seals are included.



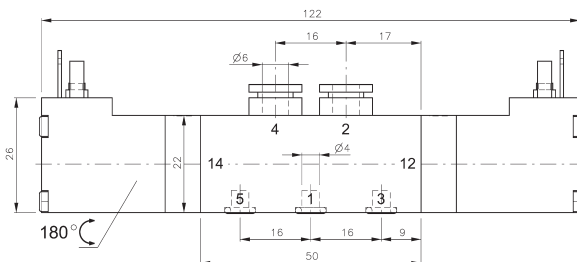
MD 53\_303



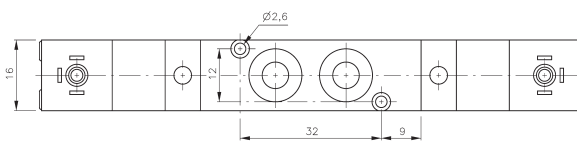
MD 53\_343



MD 53\_403



MD 53\_463



Type	Ports 1, 2, 4	Air flow	Operating press.	Power consumption	Weight
MD 53_303	M5	280 l/min	3 - 10 bar	1,8 W = / 3,0 VA ~	0,13 kg
MD 53_343	pif 4 mm	280 l/min	3 - 10 bar	1,8 W = / 3,0 VA ~	0,14 kg
MD 53_403	G 1/8"	450 l/min	3 - 10 bar	1,8 W = / 3,0 VA ~	0,14 kg
MD 53_463	pif 6 mm	450 l/min	3 - 10 bar	1,8 W = / 3,0 VA ~	0,15 kg