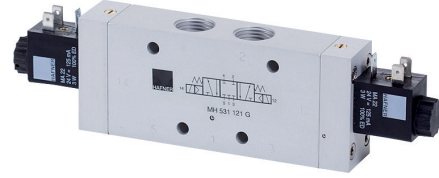
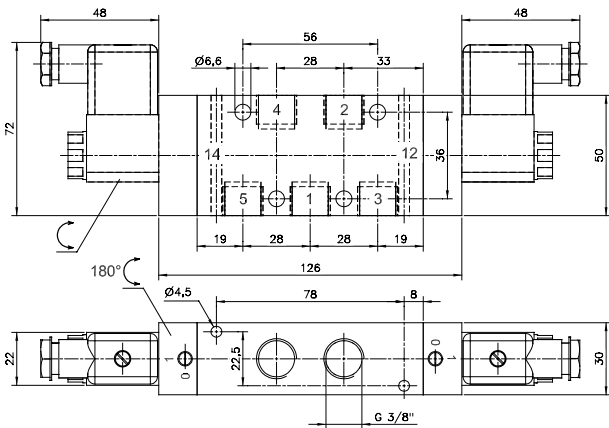
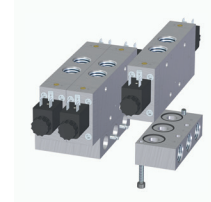
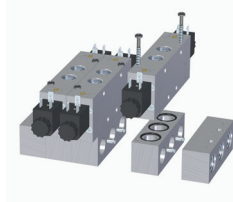


G-Series 101 G



G-Series 121 G



MH 53\_ 101 G

5/3-way solenoid valve with spring return to middle position, actuated by permanent signal.

- Type 531    centre closed
- Type 532    centre exhausted
- Type 533    centre pressurised

When ordering please complete the type number by 1, 2 or 3 according to the type required.

The G-Series valves offer the flexibility of in-line fitment as well as the option of being assembled on to a manifold as shown. Manifolds for valves type 101 G are displayed on page 2.7.2.4, manifolds for valves type 121 G are displayed on page 2.7.2.5.

Available with solenoid operators:  
230V/50Hz, 110V/50Hz, 24V/50Hz, 48V=,  
24V-, 12V=.

Valves are generally equipped with manual override. If requested without manual override please order M 53\_ \_\_\_ G.

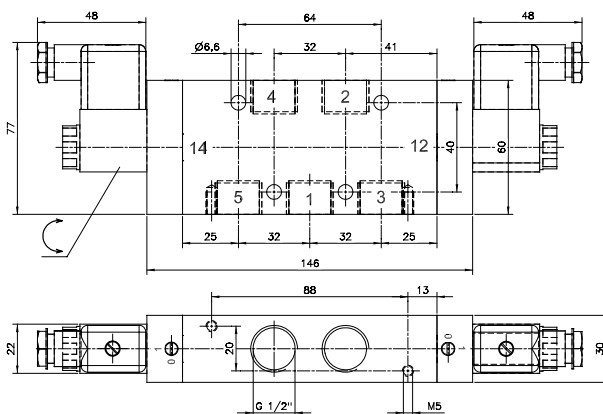
Valves are also available with external pilot feed. Type: MEH 53\_ \_\_\_ G (please add 1 digit for type and 3 digits for size).

Ports 12 and 14: G 1/8".

Minimum actuation pressure: 3 bar.

Operating pressure: 0-10 bar.

Version for vacuum on request.



MH 53\_ 121 G

Type	Port size	Air flow	Operating press.	Power consumption	Weight
MH 53_ 101 G	G 3/8"	2250 l/min	1,5 - 10 bar	3 W = / 5 VA ~	0,66 kg
MH 53_ 121 G	G 1/2"	3000 l/min	1 - 10 bar	3 W = / 5 VA ~	0,84 kg