



Data sheet, pneumatic actuator APD / APS - 300

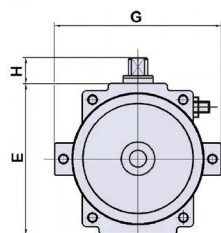
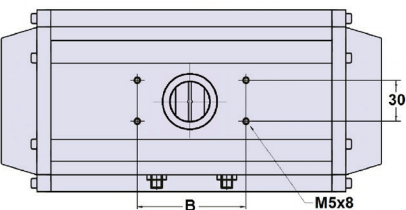
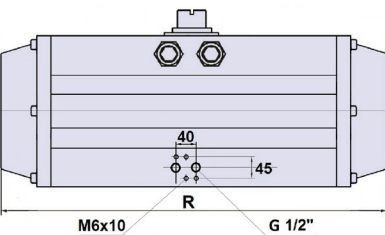
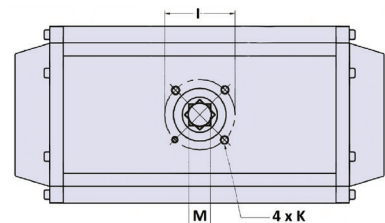


Table of dimensions

Actuator type	B	C	D	E	G	H	I	J	K	L	M x depth	R
APD/APS-300	130	-	-	348	406	30	Ø165	-	M20 x 25	-	46 x 60	758

Torque-table double-acting, type APD (Nm)

Actuator type	Control pressure Pst (bar)											
	2	2,5	3	3,5	4	4,5	5	5,5	6	7	8	
APD - 300	1526	1908	2289	2671	3052	3434	3815	4197	4578	5341	6104	

Torque-table single-acting, type APS (Nm)

Actuator type	No. springs	Md F (Nm)	Pneumatic applied torque Md (Nm) at minimum control pressure Pst (bar)																			
			2,5		3		3,5		4		4,5		5		5,5		6		7		8	
			min	max	min	max	min	max	min	max	min	max	min	max	min	max	min	max	min	max	min	max
APS - 300	4	584	849	1059	1324																	
	5	730	1061	847	1178	1228	1559															
	6	876	1273			1016	1413	1398	1795													
	7	1022	1485					1186	1649	1567	2030											
	8	1168	1697							1355	1884	1737	2266									
	9	1314	1909									1525	2120	1906	2501							
	10	1460	2122										1693	2355	2075	2737						
	11	1606	2334												1863	2591	2244	2972				
	12	1752	2546														2032	2826	2795	3589		

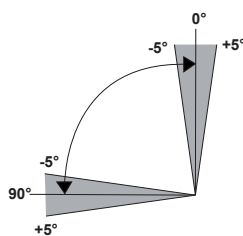
Weight, air consumption, switch times: Double-acting, type APD, single-acting, type APS

Actuator type	Weight (kg)	Volume (l)	Switch time (sek.)	Ambient temperature	
				Standard	High-temp.
APD - 300	137	54	30	-35 to +80°C	-15° to +150°C
APS - 300	163	24	50		

*Quoted switch times are guidelines for a double-stroke at 5 bar control pressure and at 50% rated loading.
 With high valve actuating speeds potentially dangerous large braking forces can arise in the actuator end positions.
 Tip: Throttle the exhaust air or select a larger actuator.

Ordering code

APD - 300 / 090 - V46 - H
APS - 300 / 090 - 06* - V46 - H
 * The number of springs (4 up to 12 pcs.) must be matched to the control pressure beforehand.



End position adjustment

The pivoting angle can be adjusted in both end positions with the adjustment screws in a pressure free condition by between +5° and -5°. The lock-nuts ensure that the new position is secured.